



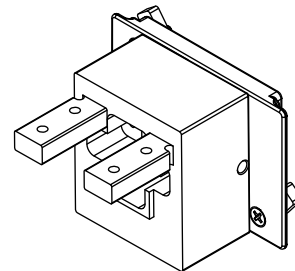
1718 W. Fullerton Chicago, IL 60614  
 Ph: 773.770.1195 • Fax: 773.935.5613  
 www.PureEdgeLighting.com • info@PureEdgeLighting.com  
 © 2016 PureEdge Lighting. All Rights Reserved.

## Installation Instructions for TruLine 1.6A In and Out Connector to Nova Modular Ceiling or Suspension

### IMPORTANT INFORMATION

- This instruction shows a typical installation.
- This instruction must be used concurrently with TruLine 1.6A and Nova Modular Suspension or Ceiling installation instructions.

**SAVE THESE INSTRUCTIONS!**



### Install the Connector

**A**

TRULINE  
CHANNEL

Lens

①

**NOTE:** Before installing the connector, make sure the TruLine 1.6A is pre-installed.

**NOTE:** Follow steps described in the TruLine 1.6A installation instructions to complete the TruLine installation.

- 1:** Determine the location of the In and Out connector on the TruLine 1.6A channel. Cut out the section of the TruLine 1.6A lens where the connector is going to be installed.

- 2:** Loosen (**Do Not Remove**) the two #2-56 set screws with a 0.035" Allen wrench.

- 3:** Slide out the mounting plate from the connector and place onto the channel.

- 4:** Tighten the two screws on the mounting plate so that the rectangular nuts grab the back of the channel lip securing the mounting plate in place.

**B**

IN AND OUT  
CONNECTOR

MOUNTING  
PLATE

TRULINE  
CHANNEL

②

#2-56  
SET SCREW

③

PHILLIPS  
SCREW  
0.035"  
ALLEN  
WRENCH

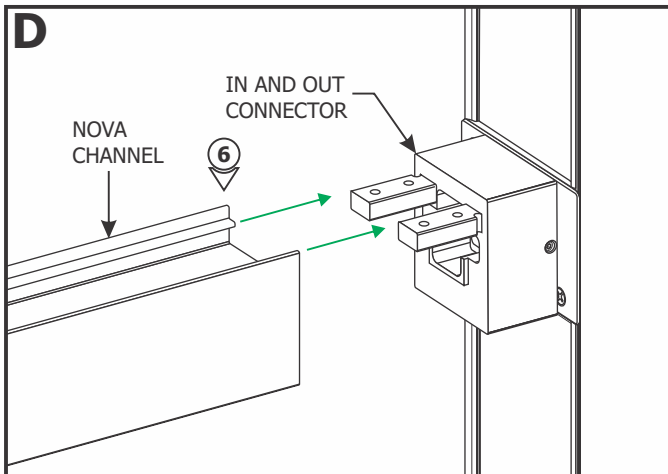
**C**

IN AND OUT  
CONNECTOR

#2-56  
SET SCREW

0.035"  
ALLEN  
WRENCH

- 5:** Place the connector on the mounting plate and secure it in place by tightening the two #2-56 set screws with a 0.035" Allen wrench.



**NOTE:** Make sure that the Nova Channel assembly is secured with supporters (refer to the instructions provided with the Nova).

**6:** Align the Nova channel with the In and Out connector and slide the channel in completely.

**7:** Tighten the four #4-40 set screws on the top of the In and Out connector with the 0.05" Allen wrench to secure the Nova channel in place.

**NOTE:** Reference the instructions provided in the Nova Modular to connect the power coming from the other end.

