



1718 W. Fullerton Chicago, IL 60614  
 Ph: 773.770.1195 • Fax: 773.935.5613  
 www.PureEdgeLighting.com • info@PureEdgeLighting.com  
 © 2016 PureEdge Lighting. All Rights Reserved.

## Installation Instructions for TruCirque .5A 24VDC

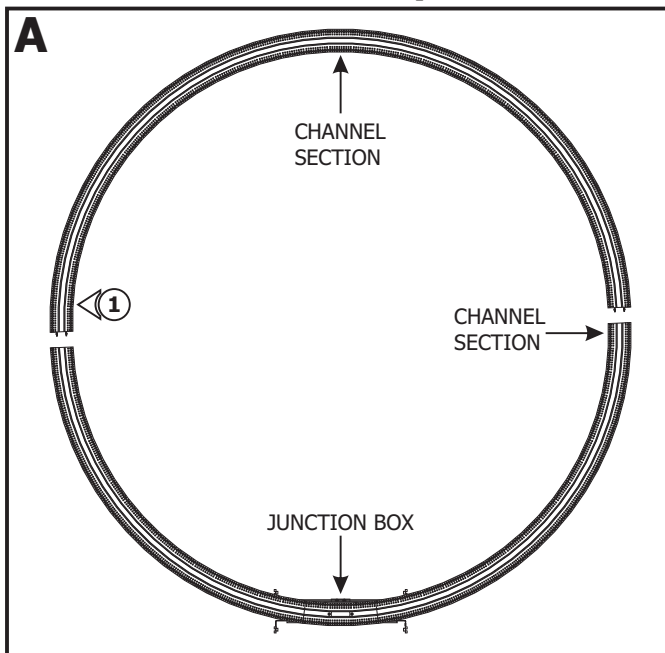


### IMPORTANT INFORMATION

- This fixture is wall or ceiling mount.
- This instruction shows a typical installation.
- This product is ETL listed for indoor use.
- It is recommended more than one person to assist in this installation.
- This product must be installed by a qualified electrician and in accordance with local electrical codes.

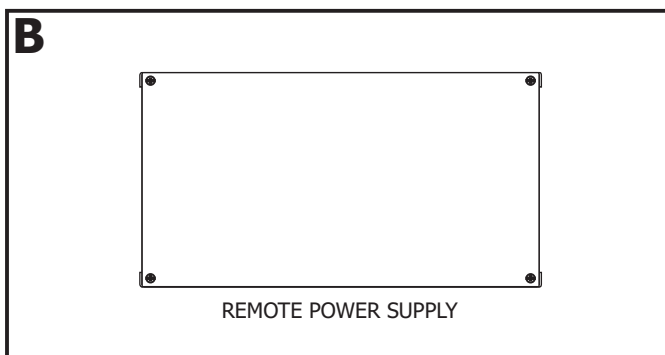
**SAVE THESE INSTRUCTIONS!**

### Section One: Assembly Guide



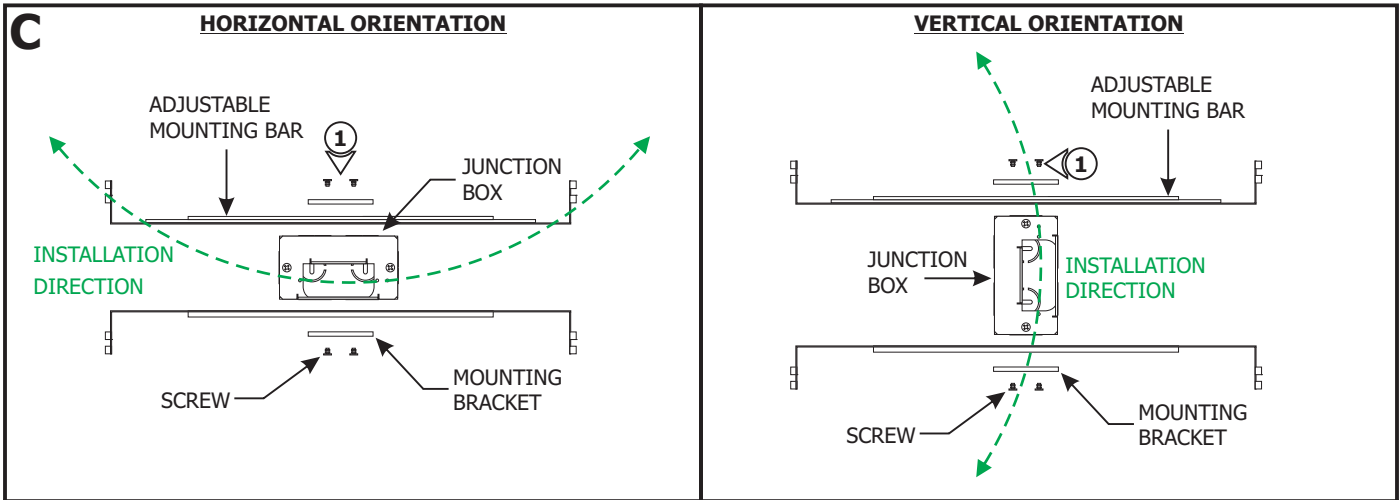
**1:** Depending on the size of the TruCirque, lay out the fixture on the floor as a guide to determine the position of each component.

### Section Two: Install the Remote Power Supply

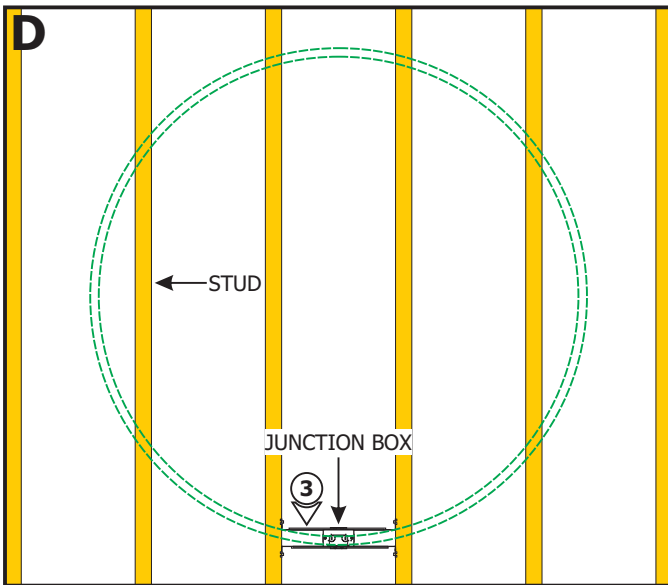


**1:** Remote power supplies must be installed within 40ft of the junction box. Refer to the instructions and wiring diagram provided with the remote power supplies.

## Section Three: Install the Junction Box and Wires (Test Power to the LED Strip)



**1:** Mount each adjustable mounting bar to one side of the junction box and secure them with the mounting brackets and two Phillips screws provided.

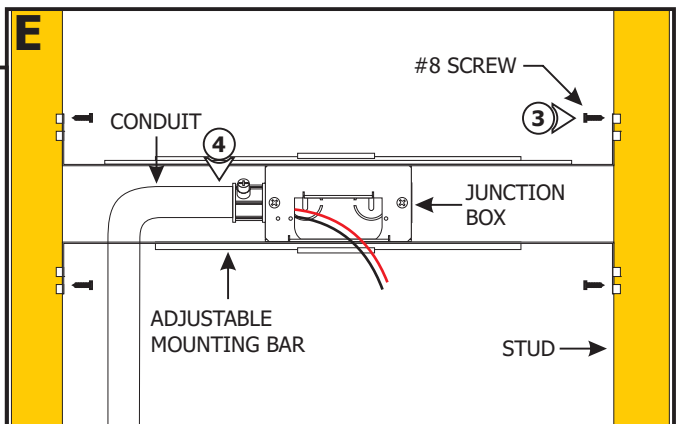


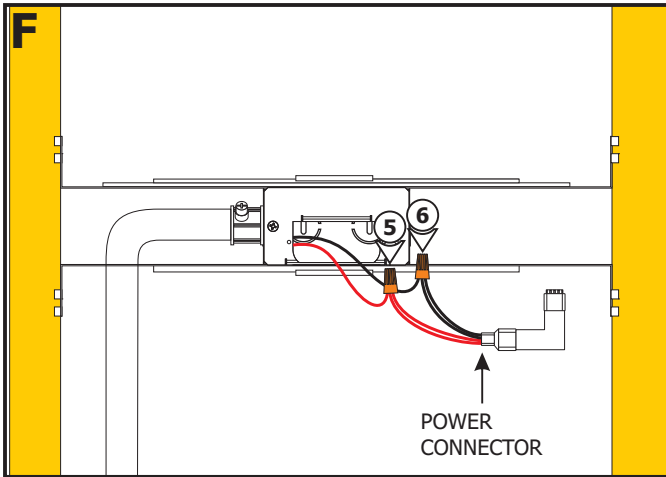
**2:** Measure and locate the junction box to the desired location.

**NOTE:** The adjustable mounting bars mount to studs that are spaced 15" to 24" apart. If the span needs to be shorter than 15", then break the bar arms from dedicated lines.

**3:** Place the lips on the adjustable mounting bars against the studs. Secure the adjustable bars to the studs with the #8 screws.

**4:** Install conduit(s) (if required by local electrical code) and run the 24VDC low voltage wires coming from the power supply to the junction box. Refer to the instructions provided with the power supply.



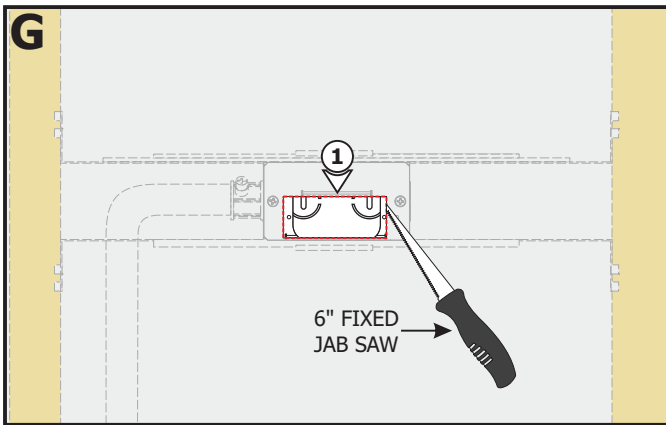


**NOTE:** Remote power supply wires must be present in junction box. Refer to instructions provided with power supply.

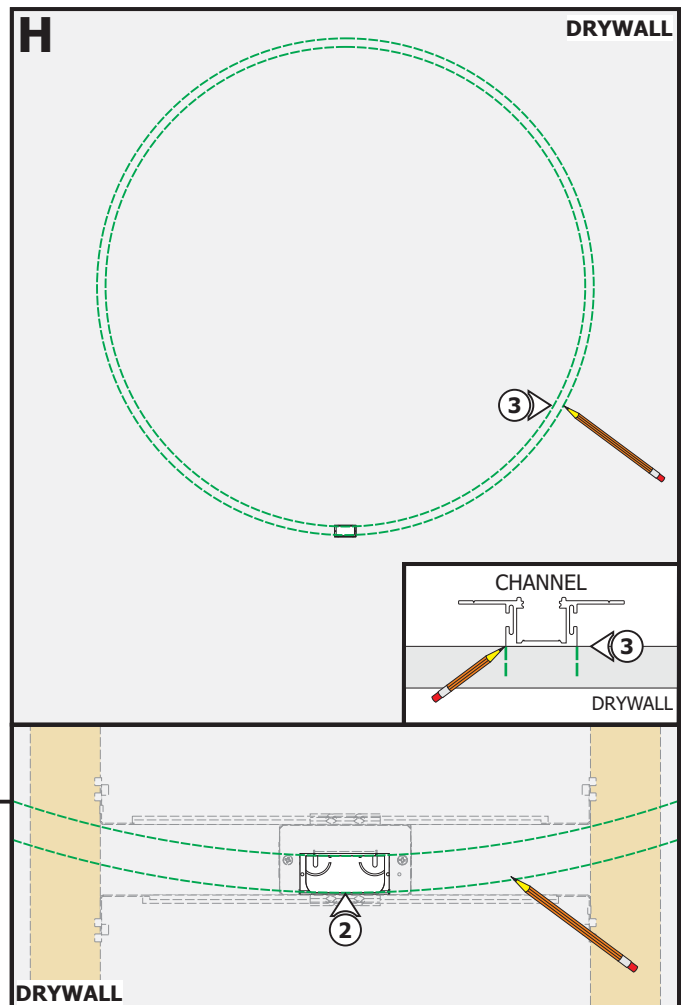
- 5:** Connect the +24VDC power supply wire to the red power connector wires using a wire nut.
- 6:** Connect the -24VDC power supply wire to the black power connector wires using a wire nut.
- 7:** Place all wire nut connections inside the junction box.

**CAUTION:** Unroll the entire LED strip from the reel and use the power connector to power the strip making sure there is no outage before continuing with the installation. Afterwards, carefully roll the LED strip loosely back into the reel.

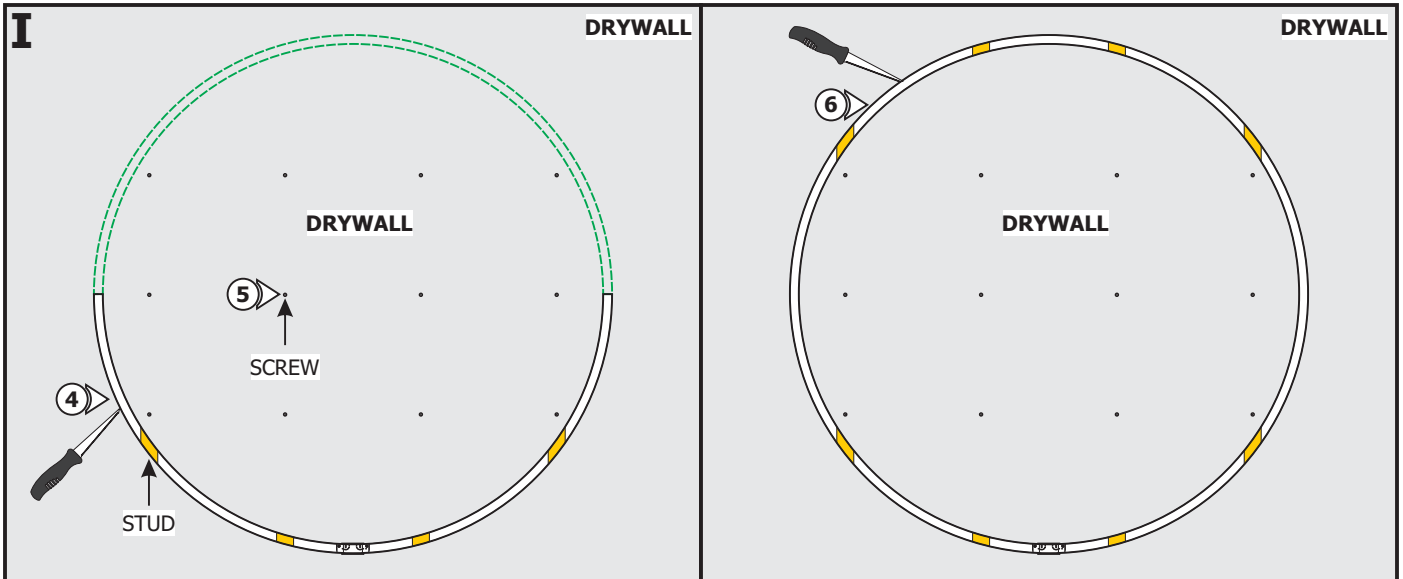
## Section Four: Prepare the Drywall and Install the Channel



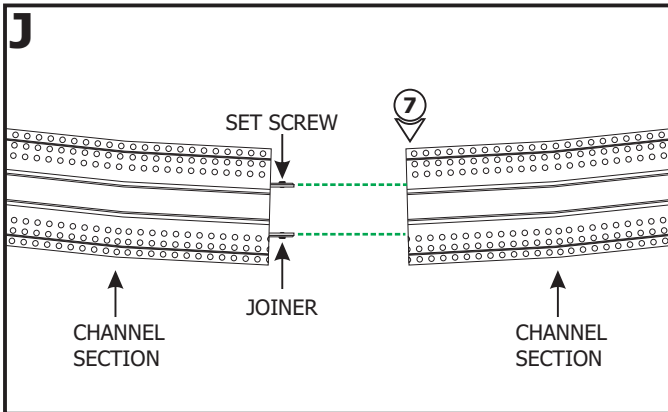
- 1:** Cut a section of drywall using a 6" fixed jab saw or other appropriate tool to expose the mounting plate area. Install the drywall.



- 2:** Place the TruCirque against the surface and align it with the the junction box mounting plate.
- 3:** If necessary, temporarily secure the fixture to the studs to hold in place. Trace both sides of the channel using a pencil to determine where to cut the drywall. Remove the channel from the studs.



- 4:** Cut out half of the marked location using a 6" Fixed Jab Saw or other appropriate tool.
- 5:** Secure the center drywall to the studs using drywall screws.
- 6:** Cut out the other half of the marked location. Mark the location of the studs on the drywall.



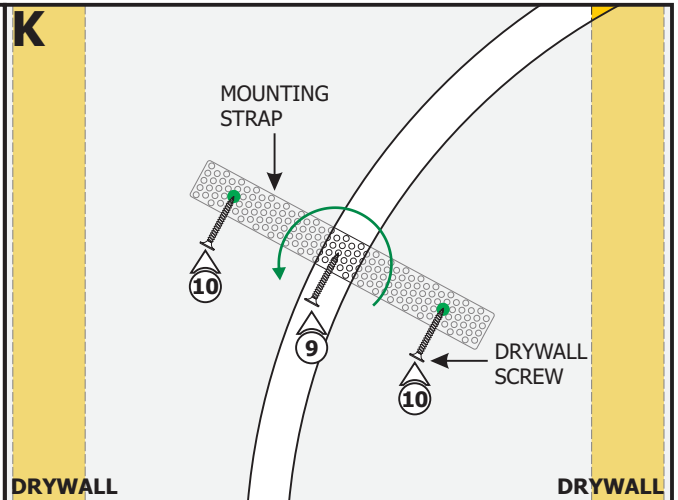
**NOTE:** Omit steps 7 and 8 if the fixture is completely assembled.

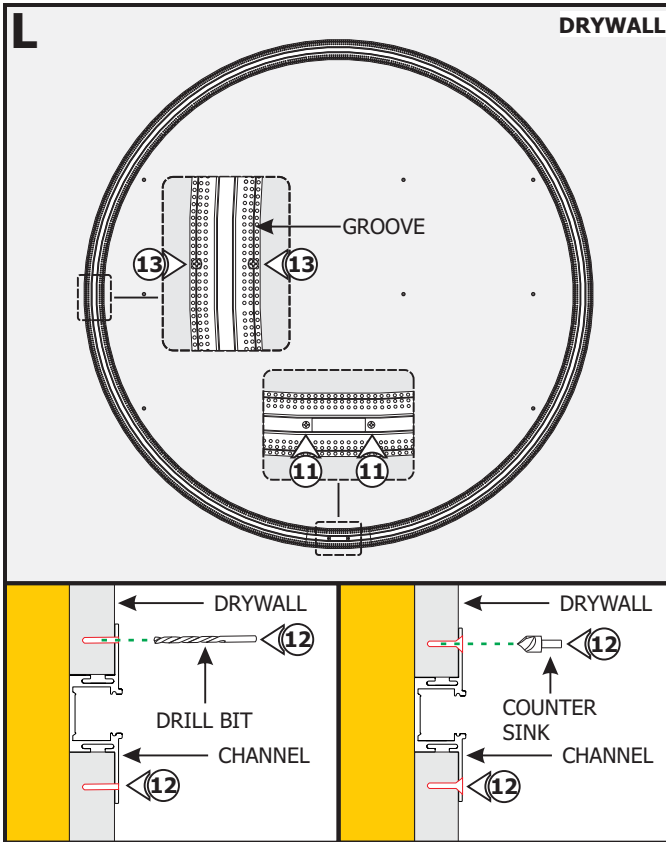
- 7:** Align the channel sections. Slide the joiners on the channel into the next section and tighten the M3 set screws using a 1.5mm Allen wrench.
- 8:** Repeat step 7 to connect the remaining channel sections.

**NOTE:** Install 2x4 support braces for additional support. For areas with lots of vibrations, it is suggested to install 2x4 support braces before installing and finishing drywall to avoid cracking of plaster. Mark the location of the support brace on the drywall.

**NOTE:** To install the channel in a wall without standard-spaced studs, install perforated mounting straps behind the drywall and secure using two drywall screws. Mark the location of any mounting straps to the drywall (see steps below).

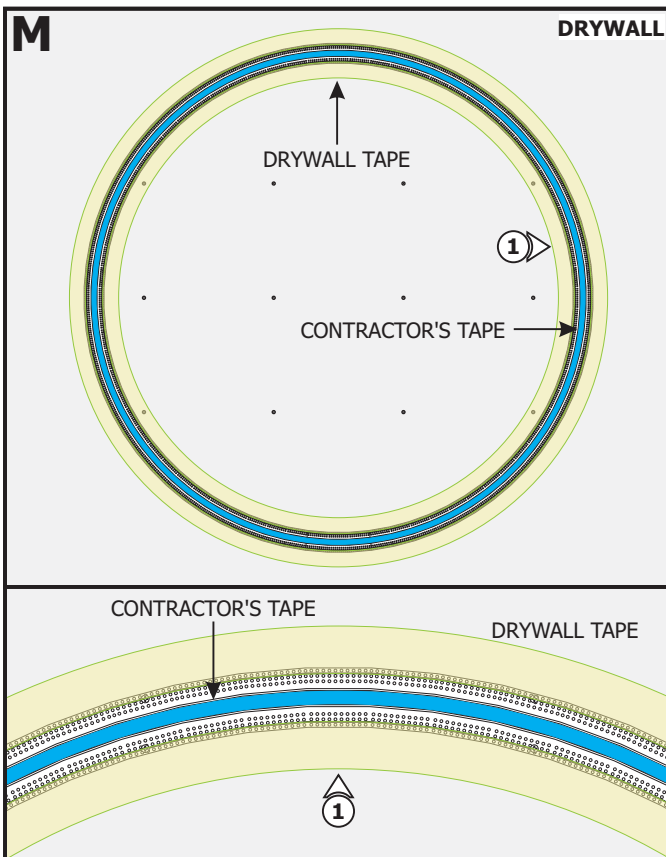
- 9:** Thread a drywall screw into the perforated material. Place the mounting strap behind the drywall and rotate into place using the drywall screw.
- 10:** Secure the mounting strap to the drywall using two drywall screws. Mark the location of the mounting strap on the drywall.





- 11:** Place the TruCirque into the cutout area and secure to the junction box using the provided screws.
- 12:** Using the marked stud and mounting strap locations on the drywall, drill and countersink along the groove lines of the channel using the provided square drill with countersink bit.
- 13:** Properly secure the channel to the drywall and mounting straps using drywall screws (**DO NOT OVER TIGHTEN**). Ensure all screw heads are flush with the channel surface.

## Section Five: Plaster, Sand and Paint

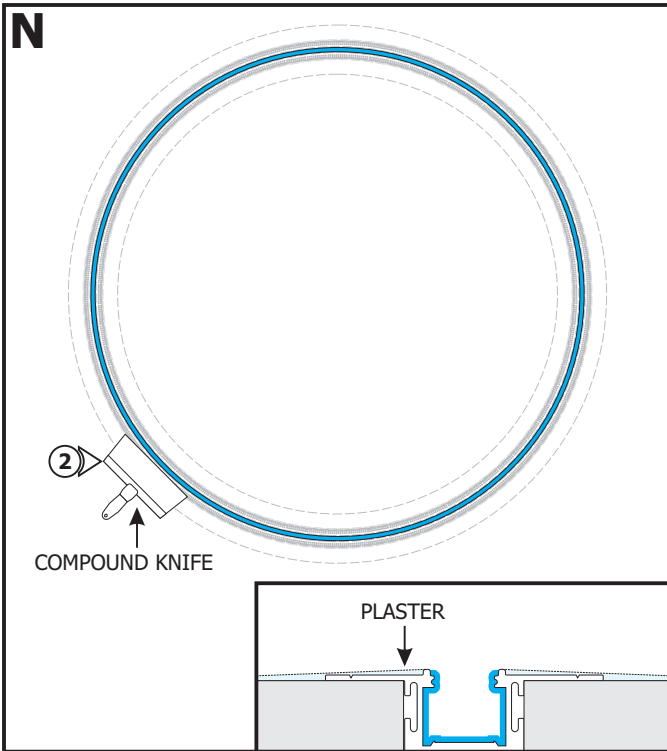


**NOTE:** Cover the channel opening with contractor's tape before plastering.

**NOTE:** For areas with lots of vibrations, it is suggested to use Durabond to avoid cracking of plaster.

**NOTE: Do Not** use premixed joint compound "Soft Mud". No use compuesto para juntas premezclado "Soft Mud".

- 1:** Must apply drywall tape (Ultra-Thin drywall tape suggested) along edges of channel up to the groove to prevent cracking of plaster after installation. **DO NOT** overlap strips of drywall tape.

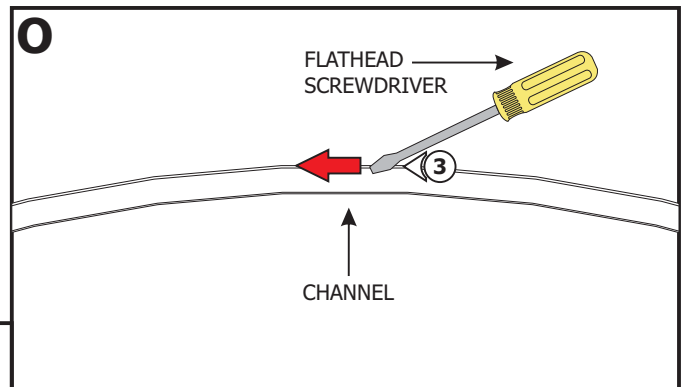


**NOTE:** Recommended plaster method: 1st Coat - Durabond 25 with 8" Blade, 2nd Coat - Easy Sand 45 with 10" Blade, 3rd Coat - skim coat with 12" blade. Taper the plaster to blend with the surface.

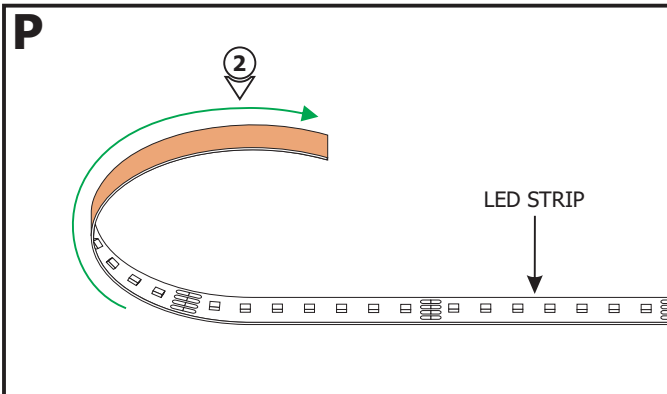
**2:** Use a 12" compound knife for a smooth compound spread. Sand, paint, and finish the plaster and drywall before removing the blue contractor's tape.

**NOTE:** Remove blue contractor's tape after plastering, sanding and painting. **DO NOT** leave tape on for more than a week.

**3:** Carefully use a flathead screwdriver to remove excess drywall from the internal bevel/edge.



## Section Six: Install the LED Strip



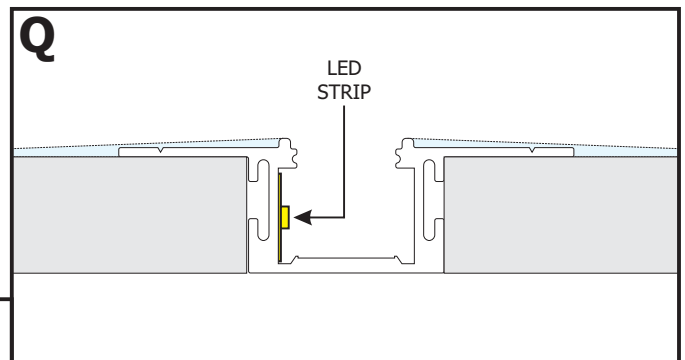
**1:** Clean the channel surface with alcohol to remove any dust or debris before continuing.

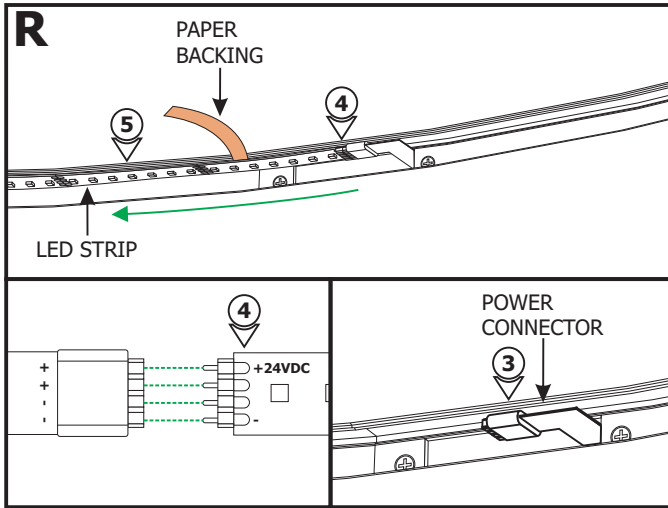
**IMPORTANT:** LED strip may not properly adhere to channel surface unless the channel is cleaned with alcohol prior to application.

**2:** Gently uncoil the LED strip before applying to the channel otherwise the strip may lift off of the surface.

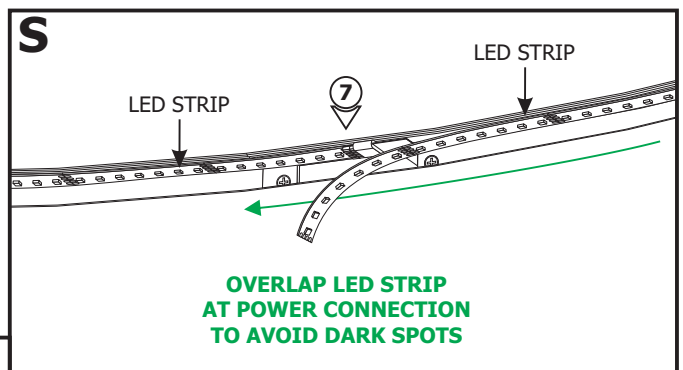
**NOTE:** For important information regarding installation and rework of the LED Soft Strip, refer to Page 9.

**NOTE:** The LED strip is placed on either side of the channel.

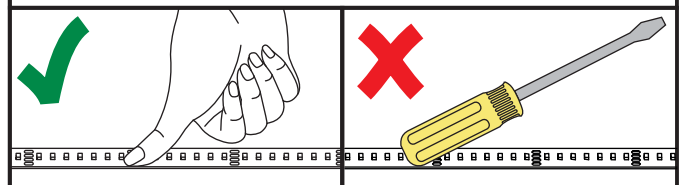




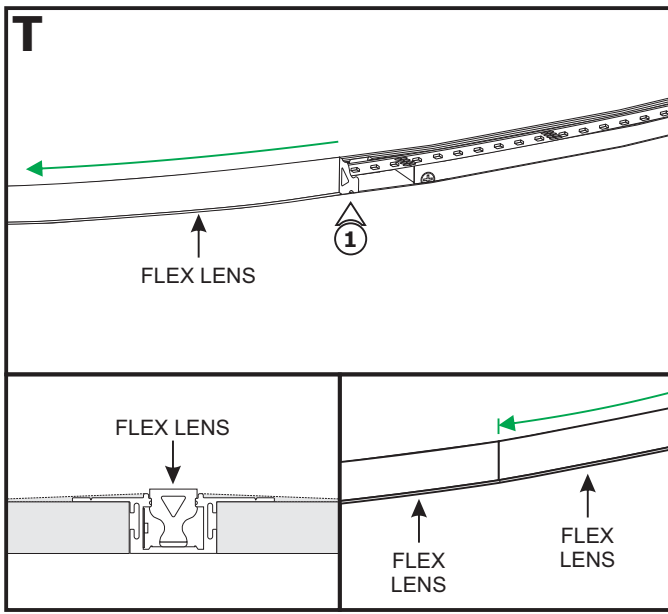
- 3:** Place the power connector into the channel where the LED Strip will be installed.
- 4:** Carefully remove the backing from the LED Strip, making sure not to remove the tape. Line up the "+" wire side of the power connector with the "+" marking on the LED Strip. Push the male connector of the LED Strip into the Power Connector.
- 5:** Firmly press down the adhesive portion of the LED Strip onto the side of the channel surface while removing the rest of the backing, making sure there are no air bubbles that can cause surface irregularities.



- 6:** Continue removing the paper backing from the LED strip and installing along the side of the channel, pressing adhesive into place using **ONLY** fingers.
- 7:** Overlap the LED strip at the power connection to avoid dark spots. If necessary, trim excess LED strip **ONLY** at dashed cutting lines.

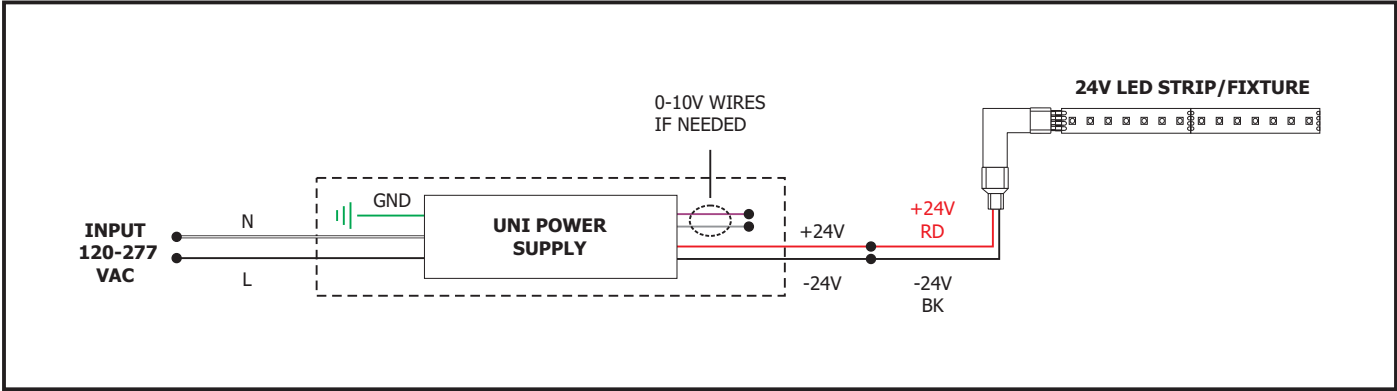


### Section Seven: Install the Flex Lens



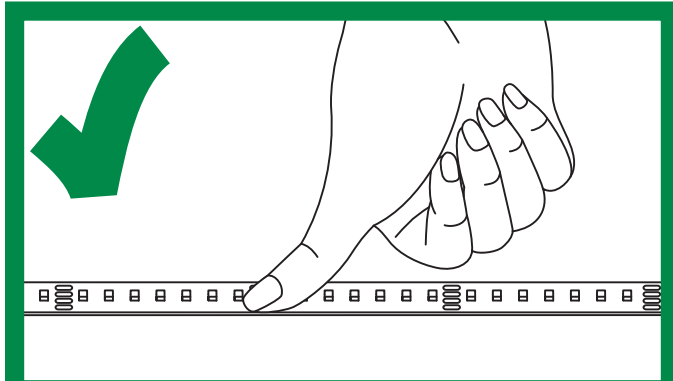
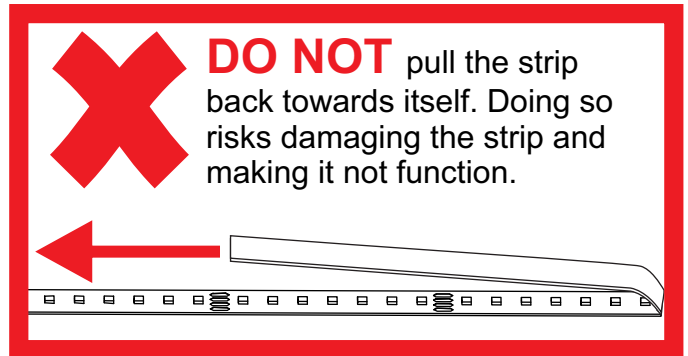
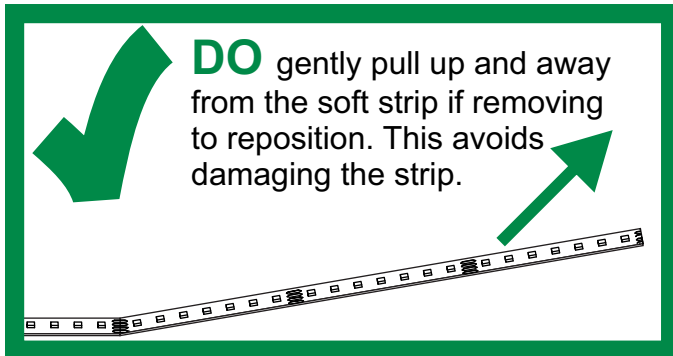
- 1:** Starting at the power connection, push the Flexible Diffused Lens into the channel. Ensure the lens is fully seated and covers the entire installation.
- 2:** If necessary, use sharp cutters to trim excess lens.

# General Wiring Diagram

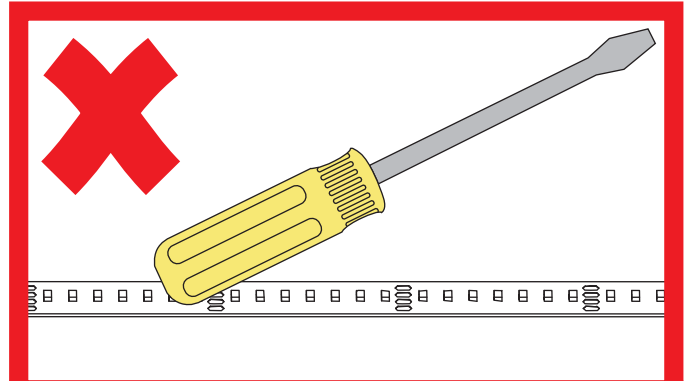




## IMPORTANT INFORMATION REGARDING INSTALLATION AND REWORK OF SOFT STRIP LED

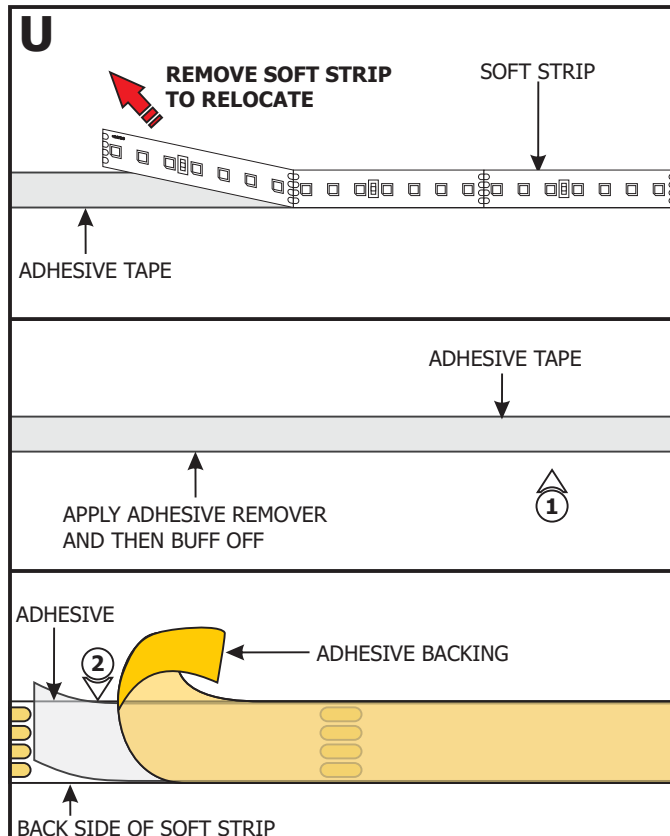


**DO** only ever use fingers to gently install soft strip to a surface **AFTER** cleaning the surface with alcohol.



**DO NOT** use any tool to install soft strip to a surface. This will damage the soft strip component.

### Relocating Soft Strip (Optional)



**NOTE:** If relocating the installed soft strip, make sure that the adhesive tape on back of the soft strip covers the entire strip. The adhesive tape isolates the strip from the installation surface. Damaged or inconsistent adhesive tape may cause the contacts on the back of the strip to come in contact with the conductive heat sink which will cause the strip to short and burn. Call Edge Lighting to get replacement adhesive tape and/or optional aluminum heat sink tape (SS-HR-F).

- 1:** To remove tape residue from back of the strip, apply WD-40, Goo Gone, or a mixture of warm water and lemon oil to the corner of a clean, dry towel. Gently buff the area containing the adhesive residue until it is completely removed.
- 2:** Gently remove a few inches from one side of the tape backing. Attach the adhesive tape to the back of the soft strip and apply moderate pressure to affix the tape. Continue this step a few inches at a time until the entire adhesive tape is attached to back of the soft strip.
- 3:** Refer to Section Six to reinstall the LED soft strip.