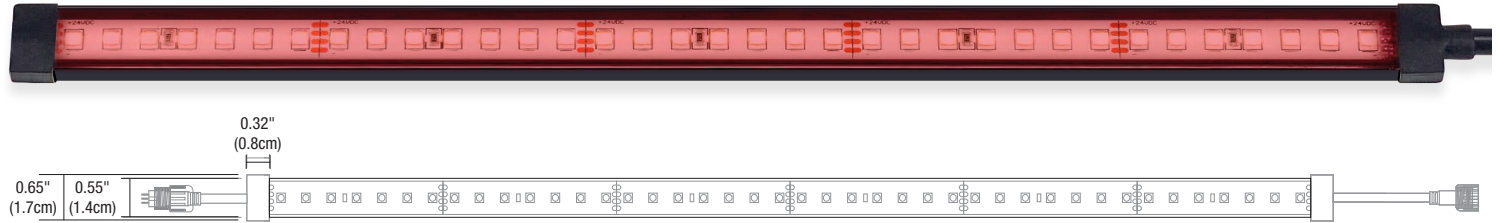


# OUTDOOR/WET LOCATION LED STOMP STRIP

## 24VDC, MONOCHROMATIC COLOR

DESIGNED BY GREGORY KAY | ASSEMBLED IN AMERICA

REV 04.24.25



### DESCRIPTION

Our Wet Location Stomp Strip is a versatile, high-performance lighting solution built for durability in outdoor environments. Featuring a 0.5" wide flat lens, the fixture is available in black or white body options with a clear or diffused UV-resistant silicone lens for high output or reduced pixelation. Designed for surface or flush mounting, the flexible design delivers uniform illumination and high efficiency in four monochromatic color effects without compromising durability. The optically clear or diffused silicone coating prevents fading over time, ensuring long-term performance and reliability.

### SPECIFICATIONS

DIMENSIONS	Width 0.55" Height: 0.19"
INPUT	24VDC with 6" leads
POWER SUPPLIES	Remote 24VDC power supply required
POWER CONSUMPTION	2.6 or 5 watts per foot
INCREMENTS	1'
MAX LENGTH	36' at 3 watts, 20' at 5 watts
BEND	90°
BEAM ANGLE	120°
BEAM TOLERANCE	+/- 30CCT
MATERIAL	UV Resistant PVC, Optically Clear or Diffused Silicone
OPERATING TEMPERATURE	-4° F (-20° C) to 122° F (+50° C)
AVERAGE LED LIFE	50,000 hrs
WARRANTY	5 Year pro-rated

### LAMP

- Monochromatic Red, Amber, Blue, and Green
- 50,000 Hour Lamp Life

### REQUIRED COMPONENTS (SOLD SEPARATELY)

- Power Connectors
- Power Supplies

### ACCESSORIES (SOLD SEPARATELY)

- Wet location junction box
- Wet location cable
- T Connectors
- Mounting Straps & Clips (Included 1 per foot with each order)
- Surface Channel for strip

### REMOTE POWER SUPPLIES\* & CONTROLS (SOLD SEPARATELY)

24VDC, Class 2 wiring

### OUTDOOR/WET LOCATION

- Pure Smart™ WiZ Pro [Power Supplies](#) & [Controls](#)
- [UNI Driver: Universal Dimming \(TRIAC, ELV, 0-10V\)](#)

### INDOOR

- Pure Smart™ WiZ Pro [Power Supplies](#) & [Controls](#)
- [UNI Driver: Universal Dimming \(TRIAC, ELV, 0-10V\)](#)

### APPLICATIONS

Coves, toe-kicks, pathways, shower accents, facade, and edge lighting

### COMPLIANCE

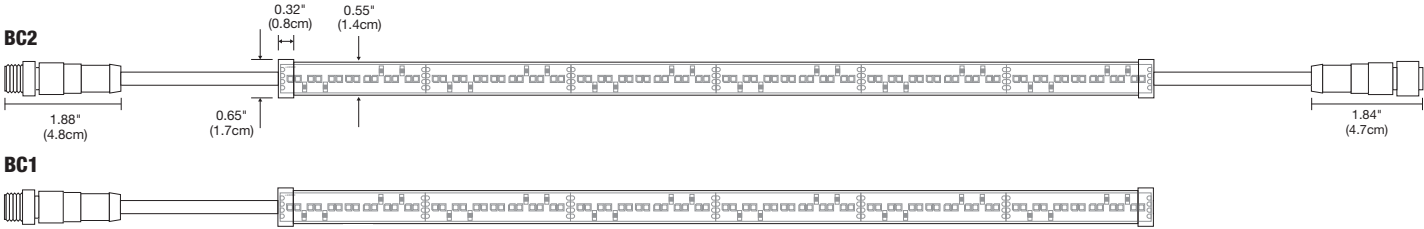
Class 2 Wiring, Outdoor Wet Location, IP67 Rated, ETL listed, RoHS, Red & Amber meet Turtle Compliance.

Wattage	Voltage	Length in Feet	Lens/Body	Color Temperature	Connector	Options
<b>SS5</b>	<b>24V</b>	<b>20</b>	<b>CB</b>	<b>AAA</b>	<b>BC1</b>	<b>W</b>
<b>SS3</b> Soft Strip Commercial Grade, 2.6 watts per foot (max 36')	<b>24V</b> 24 Volt	<b>1-36</b> <b>1-20</b>	<b>CB</b> Clear Lens Black Body <b>CW</b> Clear Lens White Body <b>D</b> Diffused Lens	<b>AAA</b> Amber 603.5 Nanometers, Turtle Friendly <b>BBB</b> Blue <b>GGG</b> Green <b>RRR</b> Red 657 Nanometers, Turtle Friendly	<b>BC1</b> One 6" wire lead & barrel connector at one end <b>BC2</b> Two 6" wire leads & barrel connector at both ends	<b>W</b> Wet Location

PROJECT		FIXTURE TYPE		DATE	
---------	--	--------------	--	------	--

# OUTDOOR/WET LOCATION LED STOMP STRIP

24VDC, MONOCHROMATIC COLOR



## POWER CONSUMPTION PER LINEAR FOOT

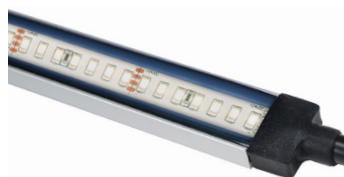
SS3 (3 watts)																																								
Maximum length before re-feeding: 40'																																								
LENGTH IN FEET	1	2	3	4	5	6	7	8	9	10	11	12	13	14	15	16	17	18	19	20	21	22	23	24	25	26	27	28	29	30	31	32	33	34	35	36	37	38	39	40
TOTAL WATTAGE	3	5	8	10	13	15	17	20	22	25	27	29	32	34	37	39	41	44	46	48	51	54	56	58	61	63	66	68	70	73	75	78	80	82	85	87	90	92	94	96

SS5 (5 watts)																				
Maximum length before re-feeding: 20'																				
LENGTH IN FEET	1	2	3	4	5	6	7	8	9	10	11	12	13	14	15	16	17	18	19	20
TOTAL WATTAGE	5	10	15	20	24	29	34	39	44	48	53	58	63	68	72	77	82	87	92	96

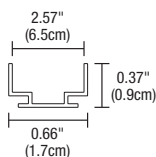
PROJECT		FIXTURE TYPE		DATE	
---------	--	--------------	--	------	--

# OUTDOOR/WET LOCATION LED STOMP STRIP

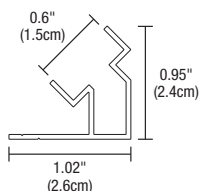
24VDC, MONOCHROMATIC COLOR



**CS.3** Flat Surface Channel



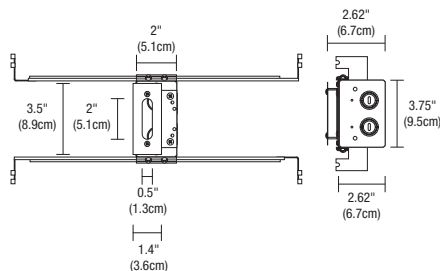
**CS45** 45 Degree Surface Channel



## SURFACE CHANNELS

Extruded aluminum provides rigid mounting on flat surfaces. Offered in 4' increments, field cuttable.

System	Length In Feet	Finish
<b>CS.3</b>	<b>4FT</b>	<b>SA</b>
<b>CS.3</b> Channel for Surface Tubing	<b>4FT</b> 4 Feet	<b>SA</b> Satin Aluminum
<b>CS45</b> 45° Channel for Surface Tubing		

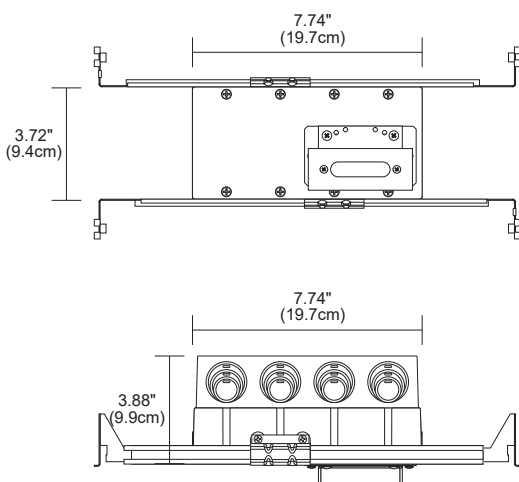


## 1" RECTANGLE CANOPY & J-BOX\*

The Slim-Profile Junction Box with Hanger Bars mounts to studs spaced between 14.5" and 25" apart behind drywall. Allows low voltage DC wires from Remote Power Supply to connect to channel wires. The Junction Box opening is covered by the fixture for a clean, safe connection. Includes a Goof Plate, for poor plastering around J-box.

\*Only to be used with Seamless Indoor Bottom Lead-In and Out

Product	Canopy	Product
<b>C</b>	<b>1RE</b>	<b>JBOX</b>
<b>C</b> Channel	<b>1RE</b> 1" Rectangle	<b>JBOX</b> Junction Box



## 1" RECTANGLE CANOPY WITH 4 GANG JUNCTION BOX AND PURE SMART WIZ PRO CV BRIDGEBOX

The slim profile 1RE Canopy with 4 Gang Junction Box come with adjustable hanger bars and a Pure Smart WiZ Pro CV Bridgebox allowing wireless control of Flex Neon. Two Class 2, 14AWG stranded conductors from the Remote Power Supply up to 40 ft away are required.

System	Type	Wattage	Control	Color Temperature	System Code
<b>C</b>	<b>1RE4G</b>	<b>96W</b>	<b>WZ</b>	<b>DW</b>	<b>SS</b>
<b>C</b> Channel	<b>1RE4G</b> 1" Rectangle Canopy with 4 Gang Junction Box	<b>96W</b> 96 Watts	<b>WZ</b> WiZ Pro Connected CV Smart Bridgebox included	<b>DW</b> Static White /Color	<b>SS</b> Stomp/Soft Strip, Lazer Strip

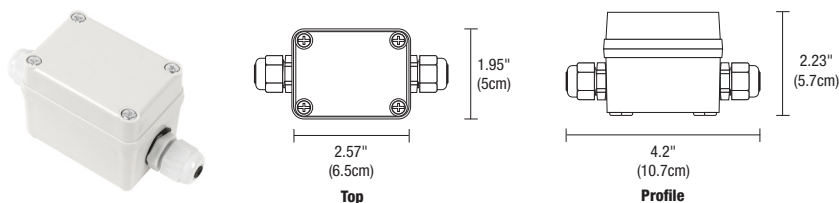
PROJECT		FIXTURE TYPE		DATE	
---------	--	--------------	--	------	--

# OUTDOOR/WET LOCATION LED STOMP STRIP

24VDC, MONOCHROMATIC COLOR

## WET LOCATION JUNCTION BOX

Wet-rated low voltage Splice Box with connectors.



Product	Type	Option
<b>2RE</b>	<b>JBOX</b>	<b>W</b>
2RE 2" Rectangle	JBOX Junction Box	W Wet Location

## WET LOCATION JUNCTION BOX WITH 6" POWER CABLE

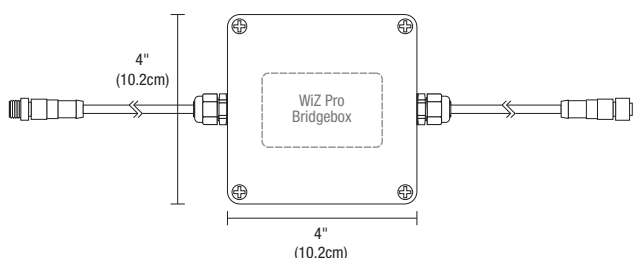
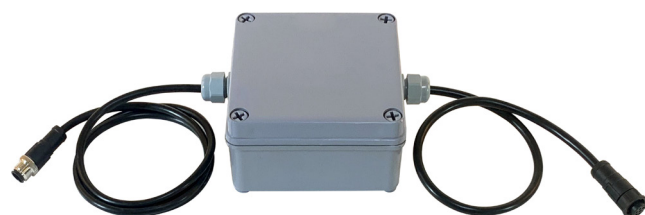
This watertight, multi-fixture Junction Box is especially designed for lighting in wet and damp locations. It is versatile, rugged and simple to install. The Junction Box comes standard with a 6" Flexible Cable providing easy, safe, and reliable connections for 24V low voltage luminaires. This box is approved for indoor and outdoor usage and complies with all the requirements of UL1241 and the National Electric Code.



Product	Canopy	Product	Size	Option
<b>SS</b>	<b>2RE</b>	<b>JBOX</b>	<b>6IN</b>	<b>W</b>
SS LED Soft Strip Flex Neon	2RE 2" Rectangle	JBOX Junction Box	6IN 6" Four Wire Connection 96IN 96" Four Wire Connection	W Wet Location

## PURE SMART WET LOCATION JUNCTION BOX WITH 8FT POWER CABLE AND WIZ PRO UR BRIDGEBOX

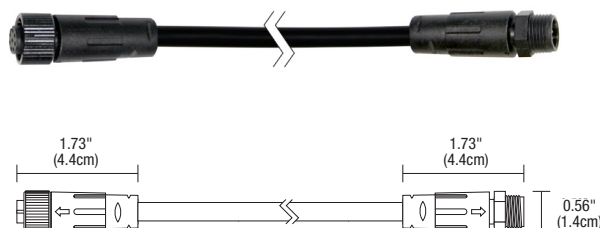
This watertight Junction Box is especially designed for lighting in wet and damp locations. The Junction Box comes standard with a 8ft of outdoor cable and both male and female barrel connectors providing easy, safe, and reliable connections for 24V low voltage luminaires. Included with the Junction Box is one WiZ Pro type Bridgebox allowing wireless control of Flex Neon. This box is approved for indoor and outdoor usage and complies with all the requirements of UL1241 and the National Electric Code.



Product	Type	Wattage	Controls	Color Temperature	Option	System
<b>BR</b>	<b>JBC</b>	<b>96W</b>	<b>WZ</b>	<b>DW</b>	<b>W</b>	<b>SS</b>
BR Bridgebox for LED Soft Strip and Flex Neon	JBC Outdoor Junction Box with Two Barrel Connectors	96W 96 Watts	WZ Wiz Connected Bridgebox Included	DW Static White /Color	W Wet Location	SS Stomp /Soft Strip, Lazer Strip

## POWER CABLE CONNECTOR WET LOCATION

The flexible power cable connector is designed to work in outdoor environments for safe and reliable connections. This Flexible Connector is easy to install and configure, helping you create innovative lighting designs in an outdoor commercial or residential space.

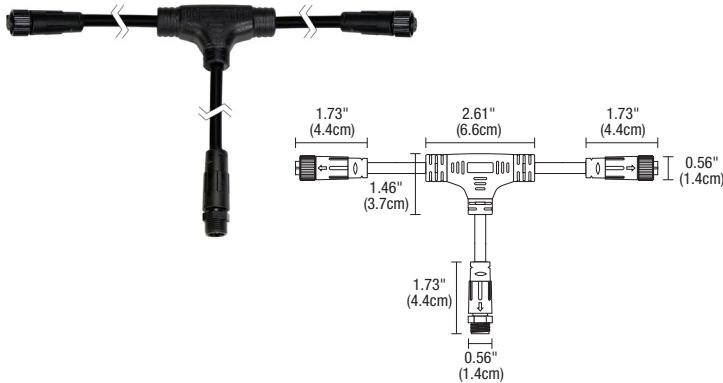


Product	Type	Size	Conductor	Option
<b>SS</b>	<b>CFX</b>	<b>16IN</b>	<b>2C</b>	<b>W</b>
SS Soft Strip and Flex Neon	CFX Flexible Connector	16IN 16" 96IN 96"	2C 2 Conductor	W Wet Location

PROJECT		FIXTURE TYPE		DATE	
---------	--	--------------	--	------	--

# OUTDOOR/WET LOCATION LED STOMP STRIP

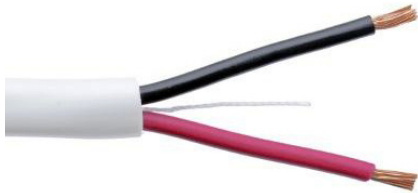
24VDC, MONOCHROMATIC COLOR



## WET LOCATION T-CONNECTOR

Our Wet Location T-Connector is a robust rugged design especially suited to withstand the challenges of damp and wet environments. This unique T-Connector has one Male and two Female Connectors and is suitable for multiple indoor and outdoor uses. Versatile design is easy to use, making installation quick and efficient.

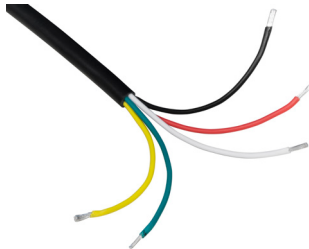
Product	Type	Size	Size	Option
<b>SS</b>	<b>CFX</b>	<b>4IN</b>	<b>2YC</b>	<b>W</b>
SS Soft Strip and Flex Neon	CFX Flexible Connector	4IN 4"	2YC Y-Shape 2 Conductor	W Wet Location



## DIRECT BURIAL LOCATION CABLE ORDER PER FOOT

Our Direct Burial, 2 Conductor Plus ground, 14 Gauge Cable is a durable and adaptable cable suitable for transmitting power, control, and switching in outdoor wet and in ground environments. Keep within 60 ft between fixture and power supply. Cable sold by the foot, simply specify the length needed. Not compatible with Tunable White.

Product	Gauge	Cable
<b>DB</b>	<b>14G</b>	<b>2C</b>
DB Direct Burial	14G 14 Gauge	2C 2 Conductor



## WET AND DAMP LOCATION CABLE ORDER PER FOOT

Our Wet Location, 5 Conductor, 14 Gauge Cable is a durable and adaptable cable suitable for transmitting power, control, and switching in indoor and outdoor wet and damp environments. Keep within 50 ft between fixture and power supply. Cable sold by the foot, simply specify the length needed. For use with Tunable White.

Product	Gauge	Cable
<b>OC</b>	<b>14G</b>	<b>5C</b>
OC Outdoor Cable	14G 14 Gauge	5C 5 Conductor



## SOFT STRIP U-STRAP

Soft Strip U-Strap Included 1 per foot with each order. May be ordered separately. Use U-Strap every 6"-12" for extra support (30 per package).

Product	Product
<b>SS</b>	<b>SU</b>
SS LED Soft Strip	SU U-Strap



## SOFT STRIP TIE STRAP

Use for mounting to poles for extra support, every 6"-12" (30 per package).

Product	Type
<b>SS</b>	<b>ST</b>
SS LED Soft Strip	ST Tie Strap

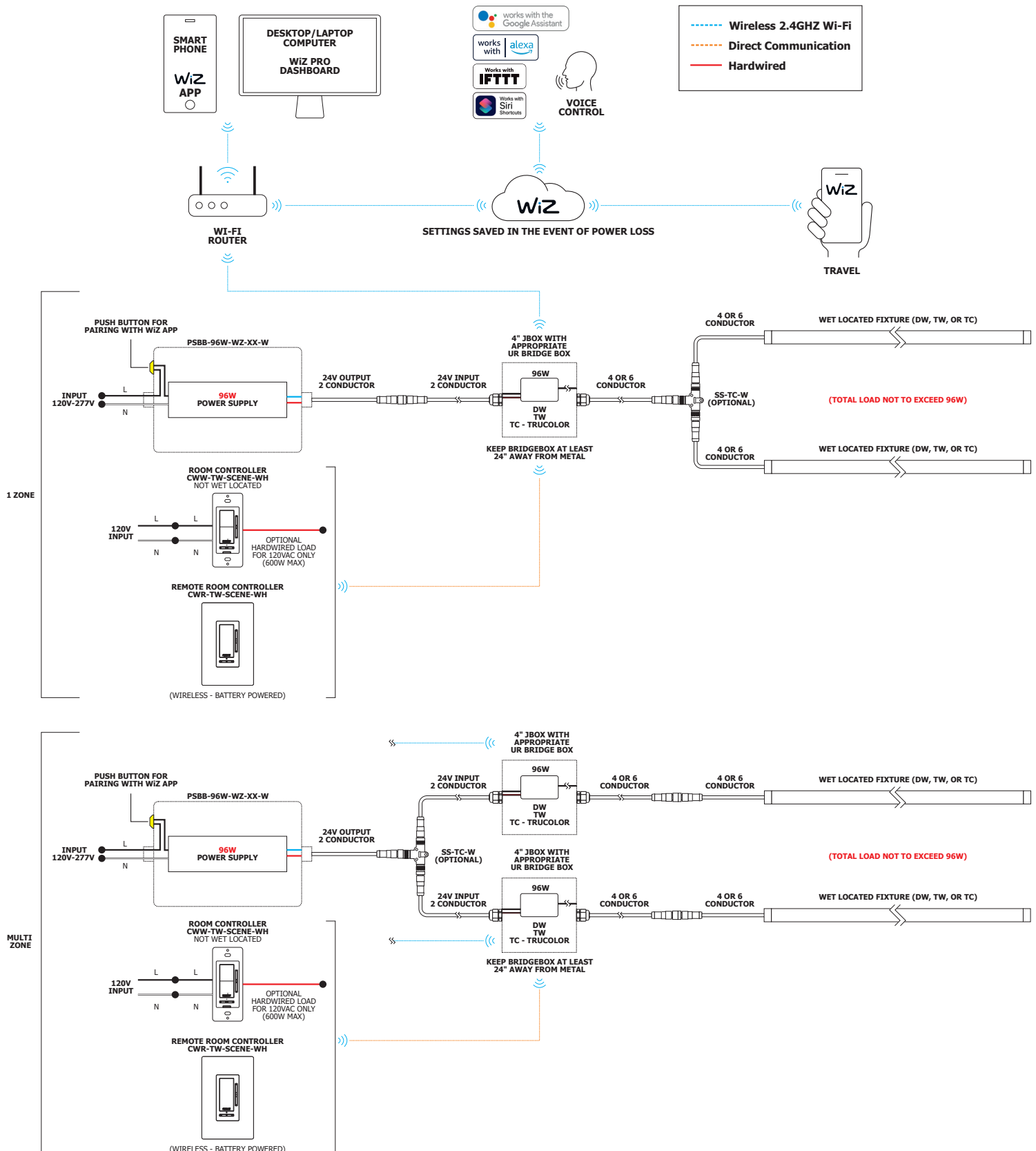
PROJECT		FIXTURE TYPE		DATE	
---------	--	--------------	--	------	--



# OUTDOOR/WET LOCATION LED STOMP STRIP

24VDC, MONOCHROMATIC COLOR

## SMART DIMMING FOR LOADS OVER 600 WATTS



PROJECT		FIXTURE TYPE		DATE	
---------	--	--------------	--	------	--