

# OUTDOOR/WET LOCATION LAZER STRIP

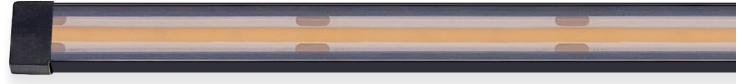
## 24VDC, RGB

DESIGNED BY GREGORY KAY | ASSEMBLED IN AMERICA

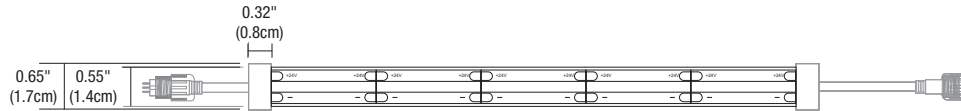
REV 04.24.25



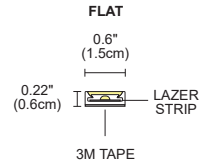
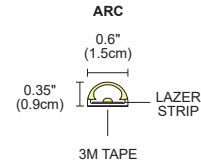
Lazer Strip Arc Diffused Lens, White Tubing



Clear Flat Lens, Black Tubing



\*Shown with Two End Connectors



### FEATURES & BENEFITS

PureEdge's Outdoor/Wet Location Lazer Strip is a high-performance, flexible LED lighting solution engineered for uniform illumination without pixelation. Developed to meet popular demand for resilient performance, premium UV-resistant silicone lenses and coating prevent fading over time, ensuring long-term reliability in rigorous environments. Featuring 148 LEDs per foot, the 24VDC COB (Chip on Board) delivers consistent light output, focused on chromacity quality providing a balanced output across the spectrum, allowing for the dynamic color effects. For secure and reliable connections, water-tight barrel connectors with 6" wire leads simplify installation while enhancing durability.

### SPECIFICATIONS

DIMENSIONS	Width 0.6" Heights - Arc: 0.35", Flat: 0.19"
INPUT	24VDC with 6" leads
POWER SUPPLIES	Remote 24VDC power supply required
POWER CONSUMPTION	4.4 watts per foot
INCREMENTS	1"
MAX LENGTH	20'
BEND	90°
BEAM ANGLE	120°
BEAM TOLERANCE	+/- 30CCT
MATERIAL	UV Resistant PVC, Optically Clear or Diffused Silicone
OPERATING TEMPERATURE	-4° F (-20° C) to 122° F (+50° C)
AVERAGE LED LIFE	50,000 hrs
WARRANTY	5 Year pro-rated

### MAXIMUM LENGTHS BEFORE RE-FEEDING

- Arc Diffused Lens: 20'
- Clear Flat Lens: 11'

### LAMP

RGB: Dynamic Red, Green, and Blue

### REQUIRED COMPONENTS (SOLD SEPARATELY)

- Power Connectors
- Power Supplies

### ACCESSORIES (SOLD SEPARATELY)

- Wet location junction box
- Wet location cable
- T Connectors
- Mounting Straps & Clips (Included 1 per foot with each order)
- Surface Channel for strip

### REMOTE POWER SUPPLIES\*, DIMMERS & CONTROLS (SOLD SEPARATELY)

24VDC, Class 2 wiring

### OUTDOOR/WET LOCATION

- [DMX & Controls](#)

### INDOOR

- [DMX & Controls](#)

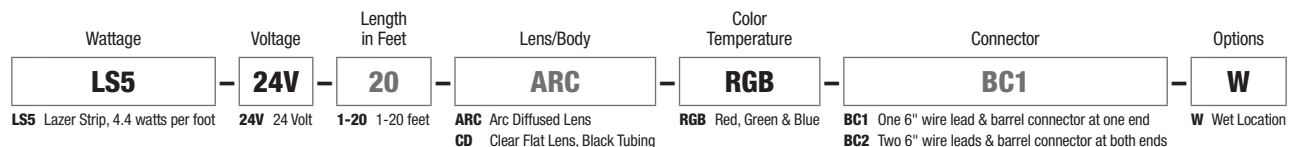
\*In-Wall Mounting and drop ceiling Kits available for select power supplies

### APPLICATIONS

Coves, toe-kicks, pathways, shower accents, facade, and edge lighting

### COMPLIANCE

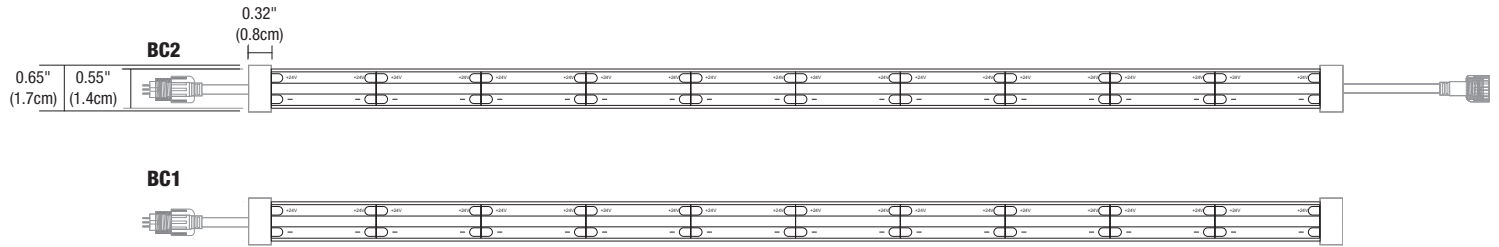
Class 2 Wiring, Outdoor Wet Location, IP67 Rated, ETL listed, RoHS.



PROJECT		FIXTURE TYPE		DATE	
---------	--	--------------	--	------	--

# OUTDOOR/WET LOCATION LAZER STRIP

24VDC, RGB



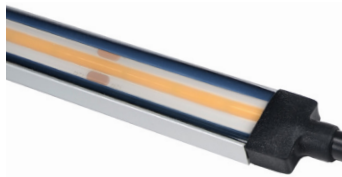
## POWER CONSUMPTION PER LINEAR FOOT

	LS5 (5 Watts)																			
LENGTH IN FEET	1	2	3	4	5	6	7	8	9	10	11	12	13	14	15	16	17	18	19	20
TOTAL WATTAGE	5	10	15	20	24	29	34	39	44	48	53	58	63	68	72	77	82	87	92	96

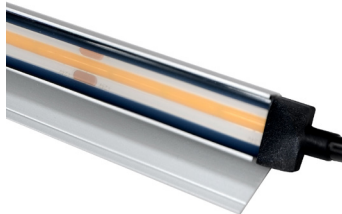
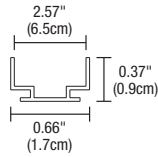
PROJECT		FIXTURE TYPE		DATE	
---------	--	--------------	--	------	--

# OUTDOOR/WET LOCATION LAZER STRIP

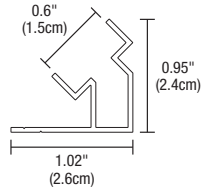
24VDC, RGB



**CS.3** Flat Surface Channel



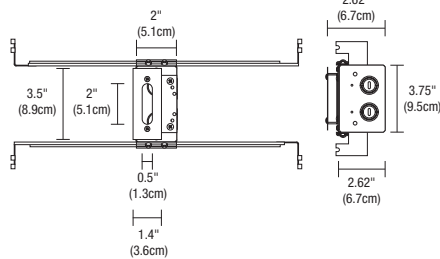
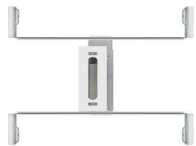
**CS45** 45 Degree Surface Channel



## SURFACE CHANNELS

Extruded aluminum provides rigid mounting on flat surfaces. Offered in 4' increments, field cuttable.

System	Length In Feet	Finish
<b>CS.3</b>	<b>4FT</b>	<b>SA</b>
<b>CS.3</b> Channel for Surface Tubing	<b>4FT</b> 4 Feet	<b>SA</b> Satin Aluminum
<b>CS45</b> 45° Channel for Surface Tubing		



## 1" RECTANGLE CANOPY & J-BOX\*

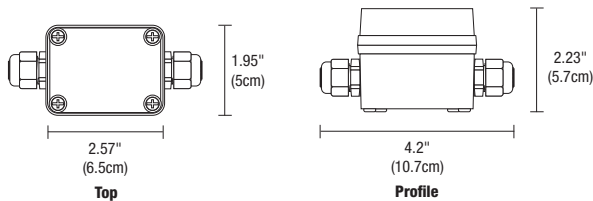
The Slim-Profile Junction Box with Hanger Bars mounts to studs spaced between 14.5" and 25" apart behind drywall. Allows low voltage DC wires from Remote Power Supply to connect to channel wires. The Junction Box opening is covered by the fixture for a clean, safe connection. Includes a GooF Plate, for poor plastering around J-box.

\*Only to be used with Seamless Indoor Bottom Lead-In and Out

Product	Canopy	Product
<b>C</b>	<b>1RE</b>	<b>JBOX</b>
<b>C</b> Channel	<b>1RE</b> 1" Rectangle	<b>JBOX</b> Junction Box

## WET LOCATION JUNCTION BOX

Wet-rated low voltage Splice Box with connectors.



Product	Type	Option
<b>2RE</b>	<b>JBOX</b>	<b>W</b>
<b>2RE</b> 2" Rectangle	<b>JBOX</b> Junction Box	<b>W</b> Wet Location

## WET LOCATION JUNCTION BOX WITH 6" POWER CABLE

This watertight, multi-fixture Junction Box is especially designed for lighting in wet and damp locations. It is versatile, rugged and simple to install. The Junction Box comes standard with a 6" Flexible Cable providing easy, safe, and reliable connections for 24V low voltage luminaires. This box is approved for indoor and outdoor usage and complies with all the requirements of UL1241 and the National Electric Code.



Product	Canopy	Product	Size	Color Temperature	Option
<b>SS</b>	<b>2RE</b>	<b>JBOX</b>	<b>6IN</b>	<b>RGB</b>	<b>W</b>
<b>SS</b> LED Soft Strip Flex Neon	<b>2RE</b> 2" Rectangle	<b>JBOX</b> Junction Box	<b>6IN</b> 6" Four Wire Connection <b>96IN</b> 96" Four Wire Connection	<b>RGB</b> Red, Green, Blue & Tunable White	<b>W</b> Wet Location

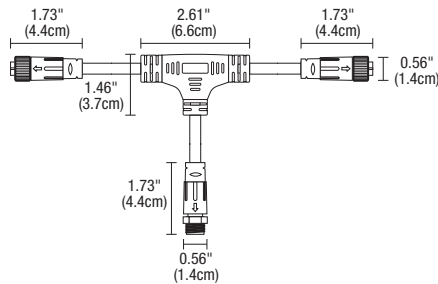
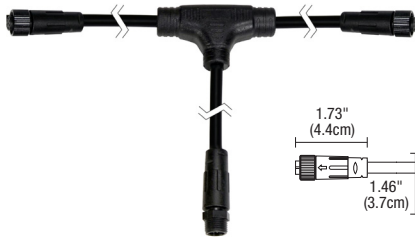
PROJECT		FIXTURE TYPE		DATE	
---------	--	--------------	--	------	--



### POWER CABLE CONNECTOR WET LOCATION

The flexible power cable connector is designed to work in outdoor environments for safe and reliable connections. This Flexible Connector is easy to install and configure, helping you create innovative lighting designs in an outdoor commercial or residential space.

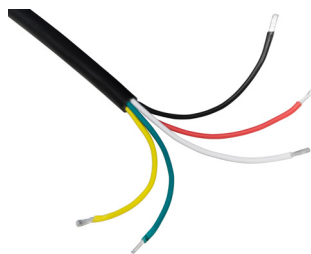
Product	Type	Size	Conductor	Option
<b>SS</b>	<b>CFX</b>	<b>16IN</b>	<b>6C</b>	<b>W</b>
SS Soft Strip and Flex Neon	CFX Flexible Connector	16IN 16" 96IN 96"	6C 6 Conductor	W Wet Location



### WET LOCATION T-CONNECTOR

Our Wet Location T-Connector is a robust rugged design especially suited to withstand the challenges of damp and wet environments. This unique T-Connector has one Male and two Female Connectors and is suitable for multiple indoor and outdoor uses. Versatile design is easy to use, making installation quick and efficient.

Product	Type	Size	Size	Option
<b>SS</b>	<b>CFX</b>	<b>4IN</b>	<b>6YC</b>	<b>W</b>
SS Soft Strip and Flex Neon	CFX Flexible Connector	4IN 4"	6YC Y-Shape 6 Conductor	W Wet Location



### WET AND DAMP LOCATION CABLE ORDER PER FOOT

Our Wet Location, 5 Conductor, 14 Gauge Cable is a durable and adaptable cable suitable for transmitting power, control, and switching in indoor and outdoor wet and damp environments. Keep within 50 ft between fixture and power supply. Cable sold by the foot, simply specify the length needed. For use with Tunable White.

Product	Gauge	Cable
<b>OC</b>	<b>14G</b>	<b>5C</b>
OC Outdoor Cable	14G 14 Gauge	5C 5 Conductor

PROJECT	FIXTURE TYPE	DATE
---------	--------------	------



**SOFT STRIP U-STRAP**

Soft Strip U-Strap Included 1 per foot with each order. May be ordered separately. Use U-Strap every 6"-12" for extra support (30 per package).

Product	Product
<b>SS</b>	<b>SU</b>
SS LED Soft Strip	SU U-Strap



**SOFT STRIP TIE STRAP**

Use for mounting to poles for extra support, every 6"-12" (30 per package).

Product	Type
<b>SS</b>	<b>ST</b>
SS LED Soft Strip	ST Tie Strap



**ARC U CLIP**

Included 1 per foot with each order. May be ordered separately. Use ARC U-CLIP every 6"-12" for extra support (10 per package).

Product	Type
<b>SS</b>	<b>SEQ2</b>
SS LED Soft Strip	SEQ2 Arc U-Clip



**VHB 3M TAPE**

Included on all outdoor tubing VHB-10FT

Product	Length
<b>VHB</b>	<b>10FT</b>
VHB Outdoor Sticky back tape	10FT 10 Feet

PROJECT		FIXTURE TYPE		DATE	
---------	--	--------------	--	------	--