

OUTDOOR/WET LOCATION LED LAZER STRIP

24VDC, MONOCHROMATIC COLOR

DESIGNED BY GREGORY KAY | ASSEMBLED IN AMERICA

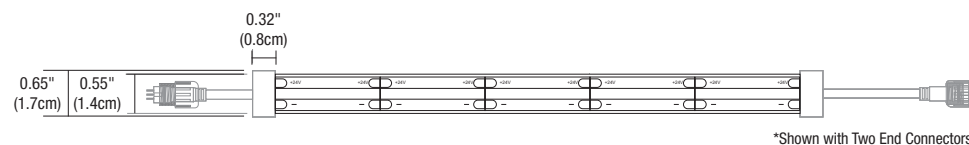
REV 04.24.25



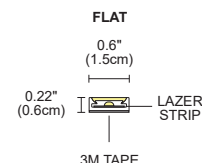
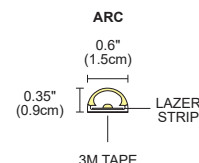
Lazer Strip Arc Diffused Lens



Lazer Strip Clear Black Tubing



*Shown with Two End Connectors



DESCRIPTION

PureEdge's Outdoor/Wet Location Lazer Strip is a high-performance, flexible LED lighting solution engineered for uniform illumination without pixelation. Developed to meet popular demand for resilient performance, premium UV-resistant silicone lenses and coating prevent fading over time, ensuring long-term reliability in rigorous environments. Featuring 148 LEDs per foot, the 24VDC COB (Chip on Board) technology delivers consistent light output across four monochromatic colors. For secure and reliable connections, water-tight barrel connectors with 6" wire leads simplify installation while enhancing durability.

SPECIFICATIONS

DIMENSIONS	Width 0.6" Heights: ARC: 0.35" FLAT: 0.19"
INPUT	24VDC with 6" leads
POWER SUPPLIES	Remote 24VDC power supply required
POWER CONSUMPTION	3.3 or 4.4 watts per foot
INCREMENTS	1"
BEND	90°
BEAM ANGLE	120°
BEAM TOLERANCE	+/- 30CCT
MATERIAL	UV Resistant PVC, Optically Clear or Diffused Silicone
OPERATING TEMPERATURE	-4° F (-20° C) to 122° F (+50° C)
AVERAGE LED LIFE	50,000 hrs
WARRANTY	5 Year pro-rated

REQUIRED COMPONENTS (SOLD SEPARATELY)

- Power Connectors
- Power Supplies

ACCESSORIES (SOLD SEPARATELY)

- Wet Location Junction Box
- Wet Location Cable
- T Connectors
- Mounting Straps & Clips (Included 1 per foot with each order)
- Surface Channel for Strip

REMOTE POWER SUPPLIES*, DIMMERS & CONTROLS (SOLD SEPARATELY)

- 24VDC, Class 2 wiring
- Pure Smart™ WiZ Pro [Power Supplies & Smart Controls](#)
- [UNI Driver: Universal Dimming](#) (ELV, TRIAC, 0-10V)
- ELV & TRIAC [Smart Dimmer & Switch](#)
- [Lutron](#) Hi-Lume/Ecosystem

APPLICATIONS

Coves, toe-kicks, pathways, shower accents, facade, and edge lighting

COMPLIANCE

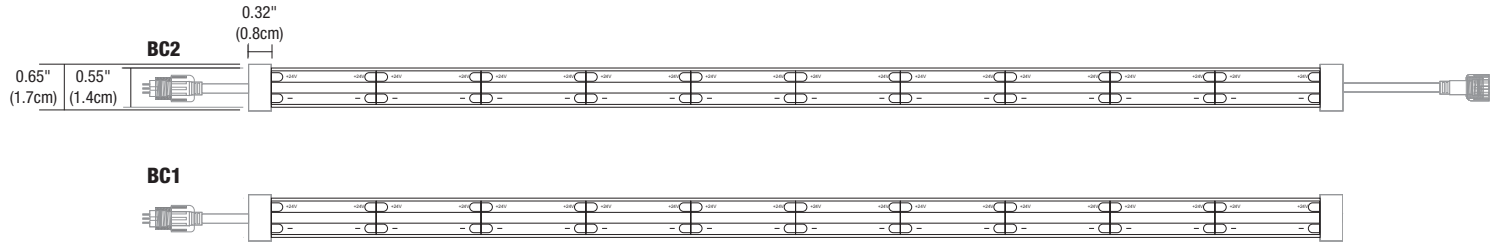
Class 2 Wiring, Outdoor Wet Location, IP67 Rated, ETL listed, RoHS, Red & Amber meet Turtle Compliance

Wattage	Voltage	Length in Feet	Lens/Body	Color Temperature	Connector	Options
LS3	24V	16	CB	AZ	BC1	W
LS3 Lazer Strip, 3.3 watts per foot LS5 Lazer Strip, 4.4 watts per foot	24V 24 Volt	1-16 1-16 ft, Arc Tubing 1-30 1-30 ft, Diffused Square Tubing at 3 watts per ft, 5 watts at 20 ft	ARC Arc Diffused Lens CD Clear Flat Lens, Black Tubing	AZ Amber 603.5 nanometers, Turtle friendly BZ Blue GZ Green RZ Red 657 nanometers, Turtle friendly	BC1 One 6" wire lead & barrel connector at one end BC2 Two 6" wire leads & barrel connector at both ends	W Wet Location

PROJECT		FIXTURE TYPE		DATE	
---------	--	--------------	--	------	--

OUTDOOR/WET LOCATION LED LAZER STRIP

24VDC, MONOCHROMATIC COLOR

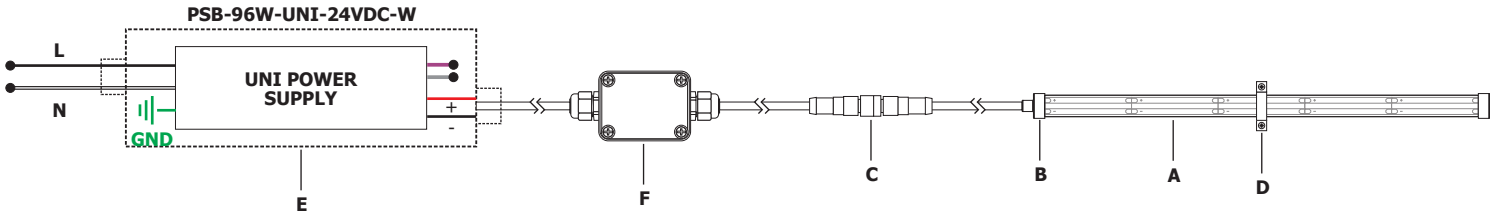


POWER CONSUMPTION PER LINEAR FOOT

LS3 (3.3 Watts)																				
LENGTH IN FEET	1	2	3	4	5	6	7	8	9	10	11	12	13	14	15	16	17	18	19	20
TOTAL WATTAGE	3	5	8	10	13	15	17	20	22	25	27	29	32	34	37	39	41	44	46	48

LS5 (4.4 Watts)																				
LENGTH IN FEET	1	2	3	4	5	6	7	8	9	10	11	12	13	14	15	16	17	18	19	20
TOTAL WATTAGE	5	10	15	20	24	29	34	39	44	48	53	58	63	68	72	77	82	87	92	96

INCLUDED & REQUIRED COMPONENTS (SOLD SEPARATELY)



A. OUTDOOR 24VDC LED SOFT STRIP (INCLUDED)

Sold in 1' increments up to 20', and may be custom ordered in 3", 5", 8", or 10" increments. Wet Location LED Strips may not be cut in the field and are not submersible.

B. SILICONE SLEEVE (INCLUDED)

Wet Location (Outdoor) LED Strips feature a water-resistant, flexible Silicone Sleeve.

C. POWER CONNECTOR (INCLUDED)

Included with Wet Location LED Strips. Comes connected to each end of the LED Strip sealed in water-resistant silicone.

D. MOUNTING STRAPS (INCLUDED)

Allow mounting of the Outdoor LED Strip to most outdoor surfaces. Mounting Straps are included with the Outdoor LED Strip, but can also be ordered separately.

E. OUTDOOR POWER SUPPLY (ORDER SEPARATELY)

Outdoor-rated Power Supplies are required for use with a Outdoor LED Strip, and are sold separately. Outdoor LED Strips have a maximum run length of 20'.

F. OUTDOOR CONNECTION BOX (ORDER SEPARATELY)

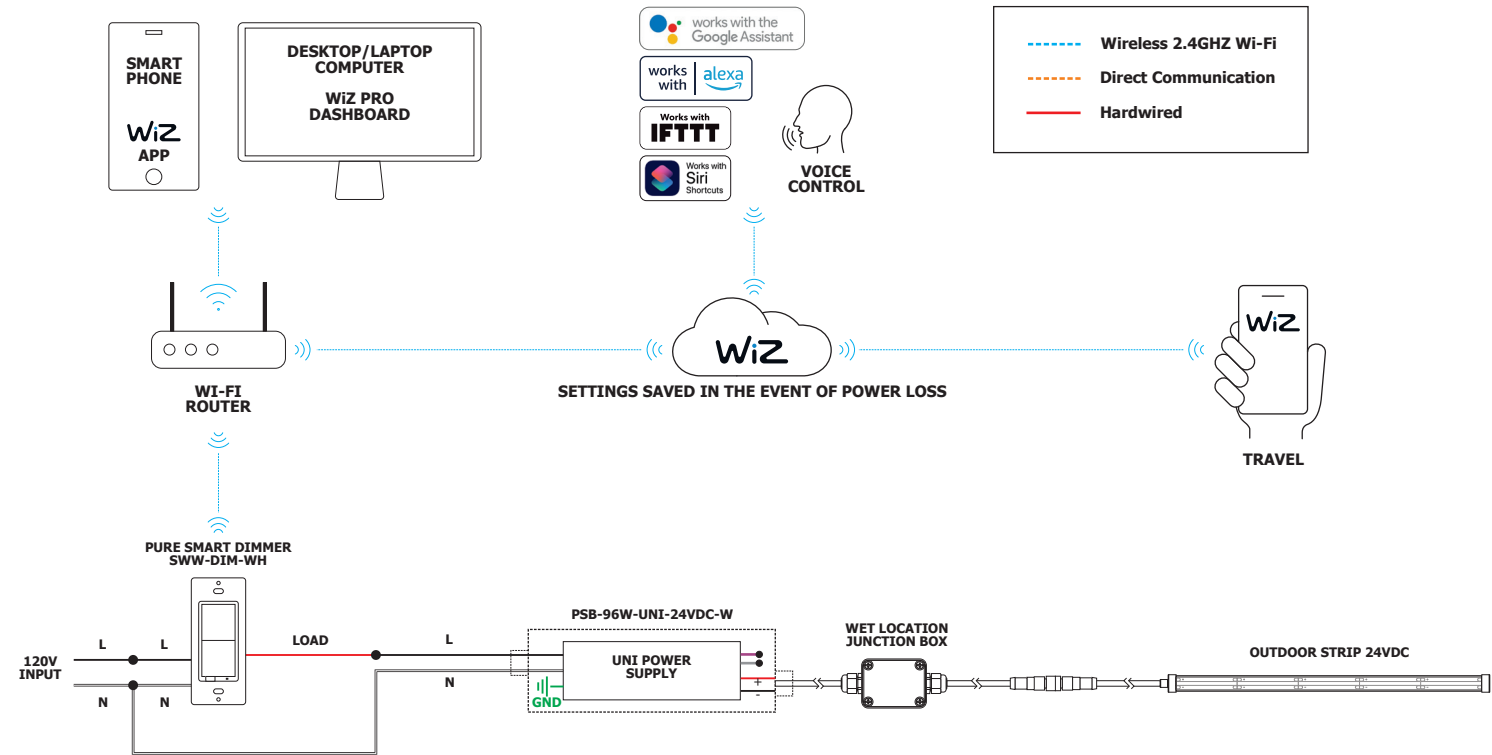
Use of Outdoor LED Strips requires an Outdoor Connection Box to house the wire connection from the LED Strip to Power Supply. The Outdoor Connection Box is sold separately.

PROJECT		FIXTURE TYPE		DATE	
---------	--	--------------	--	------	--

OUTDOOR/WET LOCATION LED LAZER STRIP

24VDC, MONOCHROMATIC COLOR

NETWORK TOPOLOGY: FOR LOADS UNDER 600 WATTS

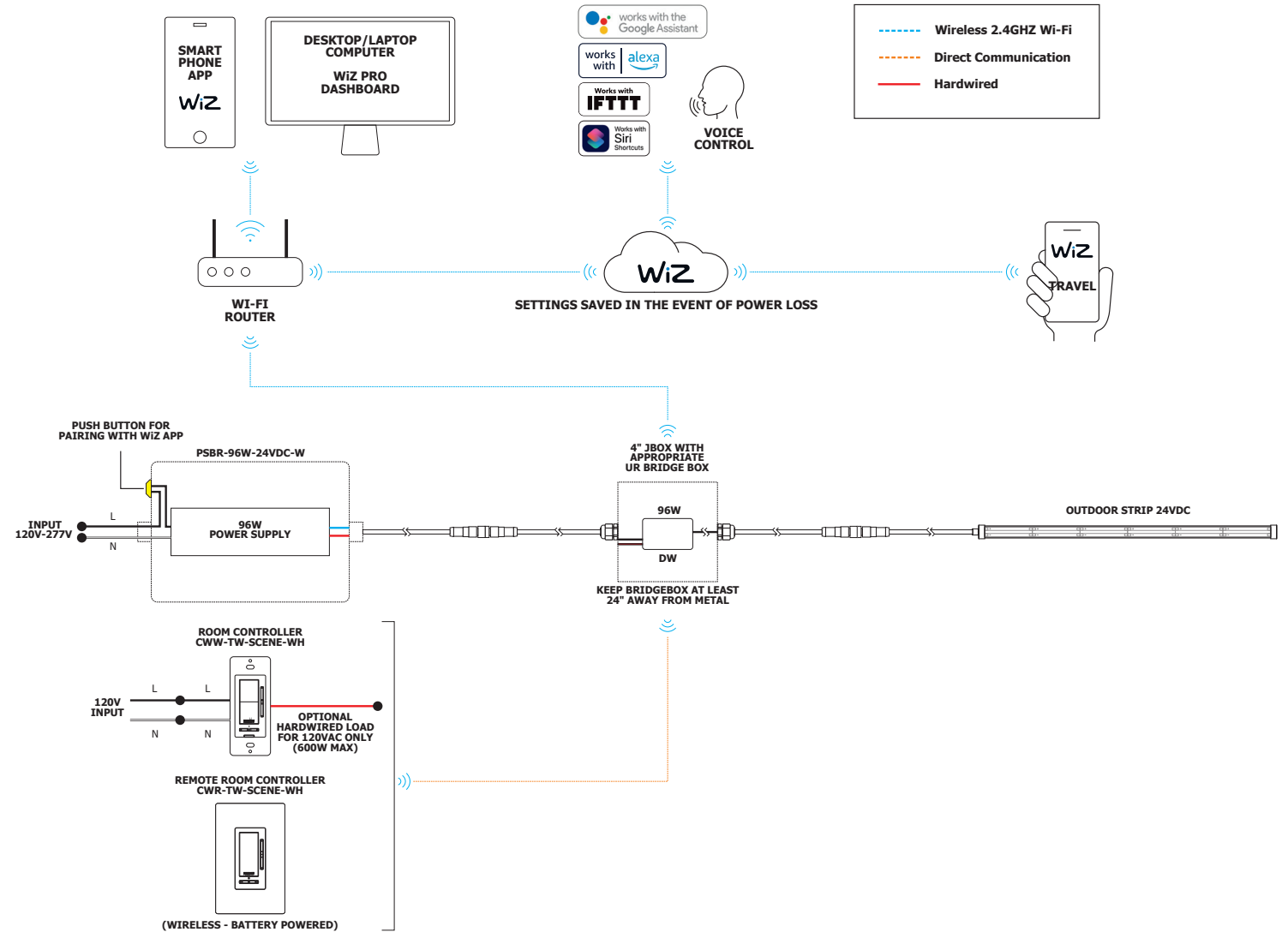


PROJECT		FIXTURE TYPE		DATE	
---------	--	--------------	--	------	--

OUTDOOR/WET LOCATION LED LAZER STRIP

24VDC, MONOCHROMATIC COLOR

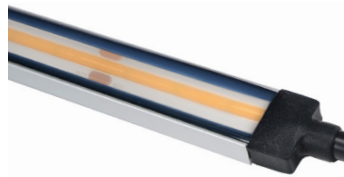
NETWORK TOPOLOGY: FOR LOADS OVER 600 WATTS



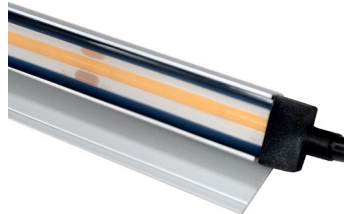
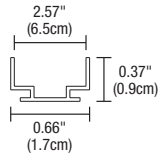
PROJECT		FIXTURE TYPE		DATE	
---------	--	--------------	--	------	--

OUTDOOR/WET LOCATION LED LAZER STRIP

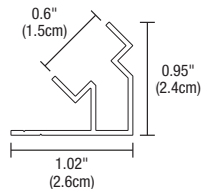
24VDC, MONOCHROMATIC COLOR



CS.3 Flat Surface Channel



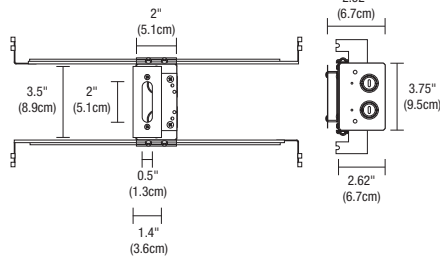
CS45 45 Degree Surface Channel



SURFACE CHANNELS

Extruded aluminum provides rigid mounting on flat surfaces. Offered in 4' increments, field cuttable.

System	Length In Feet	Finish
CS.3	4FT	SA
CS.3 Channel for Surface Tubing	4FT 4 Feet	SA Satin Aluminum
CS45 45° Channel for Surface Tubing		

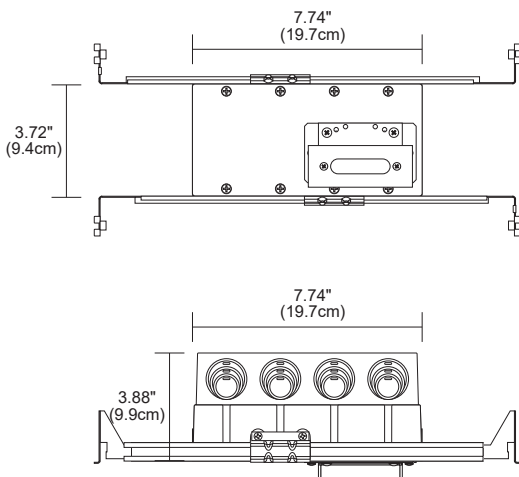


1" RECTANGLE CANOPY & J-BOX*

The Slim-Profile Junction Box with Hanger Bars mounts to studs spaced between 14.5" and 25" apart behind drywall. Allows low voltage DC wires from Remote Power Supply to connect to channel wires. The Junction Box opening is covered by the fixture for a clean, safe connection. Includes a Goof Plate, for poor plastering around J-box.

*Only to be used with Seamless Indoor Bottom Lead-In and Out

Product	Canopy	Product
C	1RE	JBOX
C Channel	1RE 1" Rectangle	JBOX Junction Box



1" RECTANGLE CANOPY WITH 4 GANG JUNCTION BOX AND PURE SMART WIZ PRO CV BRIDGEBOX

The slim profile 1RE Canopy with 4 Gang Junction Box come with adjustable hanger bars and a Pure Smart Wiz Pro CV Bridgebox allowing wireless control of Flex Neon. Two Class 2, 14AWG stranded conductors from the Remote Power Supply up to 40 ft away are required.

System	Type	Wattage	Control	Color Temperature	System Code
C	1RE4G	96W	WZ	DW	SS
C Channel	1RE4G 1" Rectangle Canopy with 4 Gang Junction Box	96W 96 Watts	WZ Wiz Pro Connected CV Smart Bridgebox included	DW Static White	SS Stomp Strip, Lazer Strip

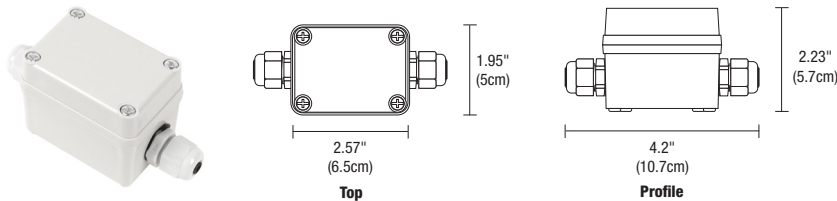
PROJECT		FIXTURE TYPE		DATE	
---------	--	--------------	--	------	--

OUTDOOR/WET LOCATION LED LAZER STRIP

24VDC, MONOCHROMATIC COLOR

WET LOCATION JUNCTION BOX

Wet-rated low voltage Splice Box with connectors.



Product	Type	Option
2RE	JBOX	W
2RE 2" Rectangle	JBOX Junction Box	W Wet Location

WET LOCATION JUNCTION BOX WITH 6" POWER CABLE

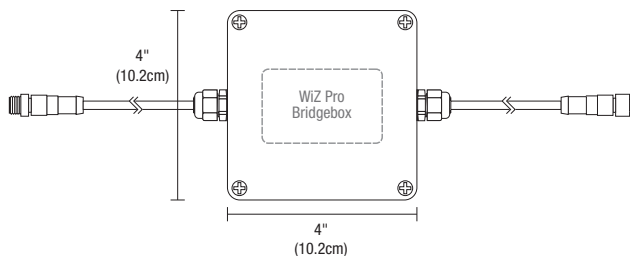
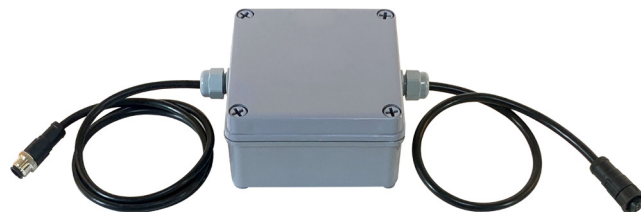
This watertight, multi-fixture Junction Box is especially designed for lighting in wet and damp locations. It is versatile, rugged and simple to install. The Junction Box comes standard with a 6" Flexible Cable providing easy, safe, and reliable connections for 24V low voltage luminaires. This box is approved for indoor and outdoor usage and complies with all the requirements of UL1241 and the National Electric Code.



Product	Canopy	Product	Size	Option
SS	2RE	JBOX	6IN	W
SS LED Soft Strip Flex Neon	2RE 2" Rectangle	JBOX Junction Box	6IN 6" Four Wire Connection 96IN 96" Four Wire Connection	W Wet Location

PURE SMART WET LOCATION JUNCTION BOX WITH 8FT POWER CABLE AND WIZ PRO UR BRIDGEBOX

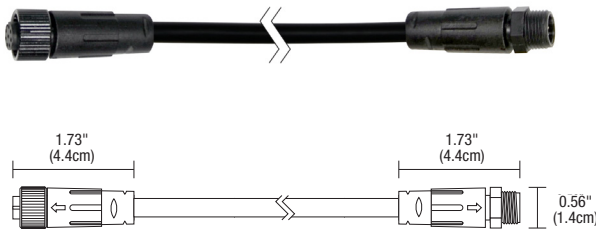
This watertight Junction Box is especially designed for lighting in wet and damp locations. The Junction Box comes standard with a 8ft of outdoor cable and both male and female barrel connectors providing easy, safe, and reliable connections for 24V low voltage luminaires. Included with the Junction Box is one WiZ Pro type Bridgebox allowing wireless control of Flex Neon. This box is approved for indoor and outdoor usage and complies with all the requirements of UL1241 and the National Electric Code.



Product	Type	Wattage	Controls	Color Temperature	Option	System
BR	JBC	96W	WZ	DW	W	SS
BR Bridgebox for LED Soft Strip and Flex Neon	JBC Outdoor Junction Box with Two Barrel Connectors	96W 96 Watts	WZ Wiz Connected Bridgebox Included	DW Static White	W Wet Location	SS Stomp Strip, Lazer Strip

OUTDOOR/WET LOCATION LED LAZER STRIP

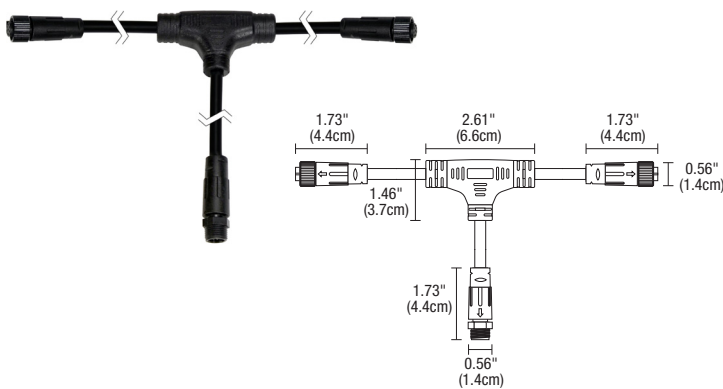
24VDC, MONOCHROMATIC COLOR



POWER CABLE CONNECTOR WET LOCATION

The flexible power cable connector is designed to work in outdoor environments for safe and reliable connections. This Flexible Connector is easy to install and configure, helping you create innovative lighting designs in an outdoor commercial or residential space.

Product	Type	Size	Conductor	Option
SS	CFX	16IN	2C	W
SS Soft Strip and Flex Neon	CFX Flexible Connector	16IN 16" 96IN 96"	2C 2 Conductor	W Wet Location



WET LOCATION T-CONNECTOR

Our Wet Location T-Connector is a robust rugged design especially suited to withstand the challenges of damp and wet environments. This unique T-Connector has one Male and two Female Connectors and is suitable for multiple indoor and outdoor uses. Versatile design is easy to use, making installation quick and efficient.

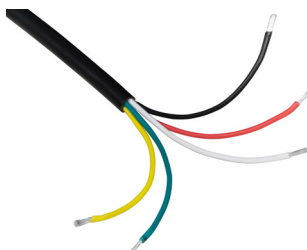
Product	Type	Size	Size	Option
SS	CFX	4IN	2YC	W
SS Soft Strip and Flex Neon	CFX Flexible Connector	4IN 4"	2YC Y-Shape 2 Conductor	W Wet Location



DIRECT BURIAL LOCATION CABLE ORDER PER FOOT

Our Direct Burial, 2 Conductor Plus ground, 14 Gauge Cable is a durable and adaptable cable suitable for transmitting power, control, and switching in outdoor wet and in ground environments. Keep within 60 ft between fixture and power supply. Cable sold by the foot, simply specify the length needed. Not compatible with Tunable White.

Product	Gauge	Cable
DB	14G	2C
DB Direct Burial	14G 14 Gauge	2C 2 Conductor



WET AND DAMP LOCATION CABLE ORDER PER FOOT

Our Wet Location, 5 Conductor, 14 Gauge Cable is a durable and adaptable cable suitable for transmitting power, control, and switching in indoor and outdoor wet and damp environments. Keep within 50 ft between fixture and power supply. Cable sold by the foot, simply specify the length needed. For use with Tunable White.

Product	Gauge	Cable
OC	14G	5C
OC Outdoor Cable	14G 14 Gauge	5C 5 Conductor



SOFT STRIP U-STRAP

Soft Strip U-Strap Included 1 per foot with each order. May be ordered separately. Use U-Strap every 6"-12" for extra support (30 per package).

Product

Product

SS

-

SU

SS LED Soft Strip

SU U-Strap



SOFT STRIP TIE STRAP

Use for mounting to poles for extra support, every 6"-12" (30 per package).

Product

Type

SS

-

ST

SS LED Soft Strip

ST Tie Strap



ARC U CLIP

Included 1 per foot with each order. May be ordered separately. Use ARC U-CLIP every 6"-12" for extra support (10 per package).

Product

Type

SS

-

SEQ2

SS LED Soft Strip

SEQ2 Arc U-Clip



VHB 3M TAPE

Included on all outdoor tubing VHB-10FT

Product

Length

VHB

-

10FT

VHB Outdoor Sticky back tape

10FT 10 Feet