

SMART LINEAR LED OUTDOOR RGB & RGB+W

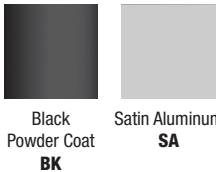
24VDC DYNAMIC COLOR CHANGING SYSTEM



DESCRIPTION

The clean lines and minimal profile make the Smart Linear LED Outdoor not only first-rate looking, but also has the capability to deal with internal heat. Special thermal convection design inside, enables heat to be transferred rapidly, and allows the fixture size to be smaller than traditional light sources, thus achieving an excellent price to performance ratio. Can be Ceiling, floor, or wall mounted to provide a flood of light, and has wall washing functionality, with it's selection of Oval lenses. The Smart Linear is manufactured with adjustable mounting clips that allows the fixture to be mounted for various outdoor applications. Link multiple fixtures to sync color effects. Single zone control not DMX addressable. Power and Control the Smart IP66 Rated fixture with a full touch controller and Universal (UNI) power supply (Sold Separately, See Pages 3-5). Controller is NOT outdoor rated, and shall be located at a remote indoor location. Multiple Smart Linears RGB or RGB+W can be ganged together, up to 100 watts, before re-feeding.

FINISHES



ELECTRICAL

- Input Voltage: 24VDC, contains integrated DMX driver on board. All fixtures will function to a single address only.
- Universal (UNI) Power Supply 120/277VAC-24VDC, Sold Separately SKU: **PSB-(0W or 96W)-UNI-24VDC-W**
- Class 2 Power Supply
- Power Consumption of 1.75 watts/FT for RGB, and 3 watts/FT for RGB+W
- LED's/FT: 9 LED's for RGB, and 4.5 + 4.5 LED's for RGB + W
- Order in 4 Wattage/Length options, and gang multiple fixtures together, up to 100 watts before re-feeding
- Cable Connector: **OC-CFX-5CON-(12IN or 96IN)-W** Cord conductors can be ordered to gang multiple fixtures together for a watertight connection
- Dimming: DMX 512 Protocol Color Sync single zone non-addressable

FEATURES & BENEFITS

- 4 Wattage and 2 Length Options: 4W 24", and 7W 48" for RGB, and 6W 24", and 12W 48" for RGB+W
- Controllable RGB (Red, Green, and Blue) LED's, OR RGB+W (Red, Green and Blue, Plus White) LED's.
- Adjustable Mounting Clips: Innovative mounting clips are attached for Ground Level, Ceiling, or Wall mounting options, for Wall Grazing, Wall Washing, and general outdoor lighting applications
- Easy Installation: Push-In Water Right Barrel Connectors
- Beam Spread: 35°, 25°x35° Oval, and 36°x42° Oval
- 2 Finish Options: Silver or Black Powder Coated Finish

PHYSICAL

- Material: Low Copper Aluminum Die Casting with High Pure Aluminum Alloy Extrusion, High Weather Resistant Outdoor Powder Coated Finish, Tempered Optical Glass Diffuser 1.25" thick LED COB
- Sizes: **RGB - 5W24** (24" x 0.9" x 1.3"), and **9W48** (48" x 0.9" x 1.3")
RGB+W - 6W24 (24" x 0.9" x 1.3"), and **12W48** (48" x 0.9" x 1.3")
- Operating Temperature: -4°F to 113°F
- Average LED Life: 50,000 Hours

COMPLIANCE

- Class 2 Power Supply
- ETL Listed
- IP66 Wet Rated

APPLICATIONS

Smart Linear exterior LED fixture can be used for Modern Architecture, Buildings, Bridges, Sculptures, etc.

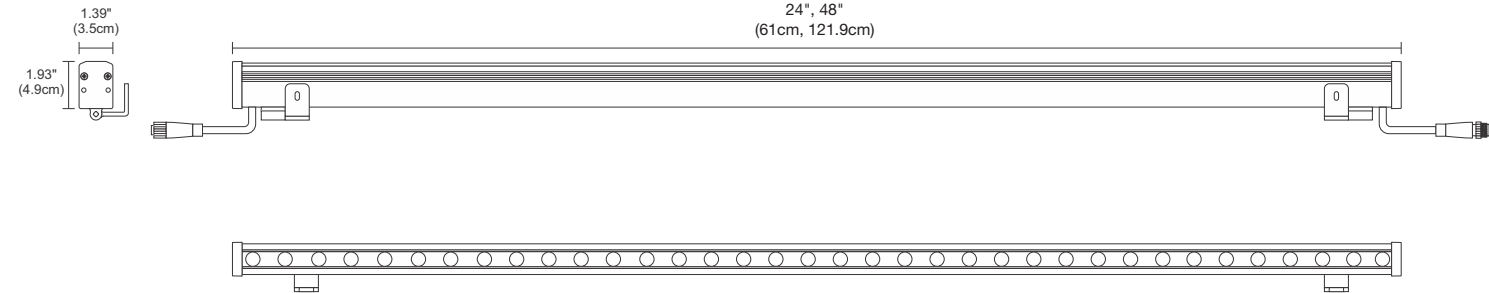
WARRANTY

5 Year Pro-rated Warranty from Time of Purchase

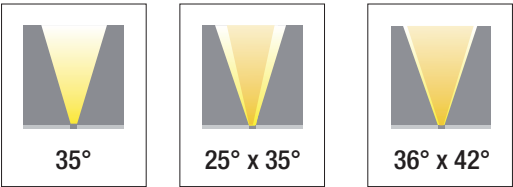
System	Wattage & Length	Beam Spread Lens	Color Temperature	Finish
SML0-24V	5W24	25X35	RGB	SA
SML0-24V Smart Linear Outdoor	5W24 24", 5 Watts (RGB Only) 9W48 48", 9 Watts (RGB Only) 6W24 24", 6 Watts (RGB+W Only) 12W48 48", 12 Watts (RGB+W Only)	35 35° Lens 25X35 25°x35° Oval Lens 36X42 36°x42° Oval Lens	RGB Red, Green, Blue RGBW Red, Green, Blue and White	BK Powder Coated Black SA Satin Aluminum
PROJECT	FIXTURE TYPE			DATE

SMART LINEAR LED OUTDOOR RGB & RGB+W

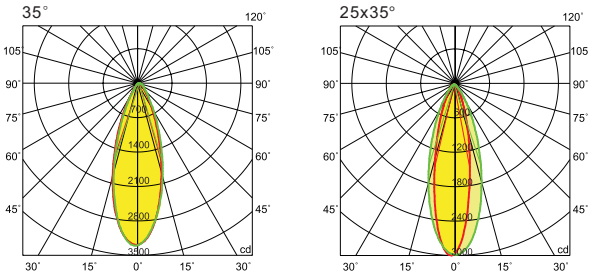
24VDC DYNAMIC COLOR CHANGING SYSTEM



Nominal Beam Spread



Nominal Light Distribution Graphs



PROJECT		FIXTURE TYPE		DATE	
---------	--	--------------	--	------	--

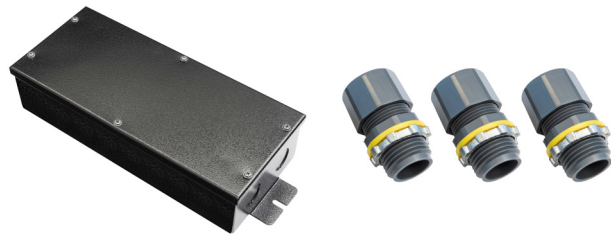
SMART LINEAR LED OUTDOOR RGB & RGB+W

24VDC DYNAMIC COLOR CHANGING SYSTEM

Components: Components for the Mini Star Linear Fixture

UNI POWER SUPPLY

Universal Power Supply: 120/277VAC-24VDC with Universal dimming ELV, Triac or 0-10V dimmers. 100-0% Flicker free dimming. Aluminum casing for optimal heat dissipation. Isolated output power per NEC and UL safety requirements. UL & ETL recognized/ listed, meets UL8750, 1310 requirement. Auto-reset; short circuit, overload and thermal protection. Class 2 power supply. Efficient, High power factor > 0.90. Exceeds California Title 24 Requirements AAA rating. Efficiency > 84% Power Factor > 0.90. Case TC 90°C Max. Protection Input / Output Storage -30°C / +90°C Humidity 95% RH Max. Class 2 Power Supply Dimming ELV, Triac, 0-10V IP Rating IP20, IP67



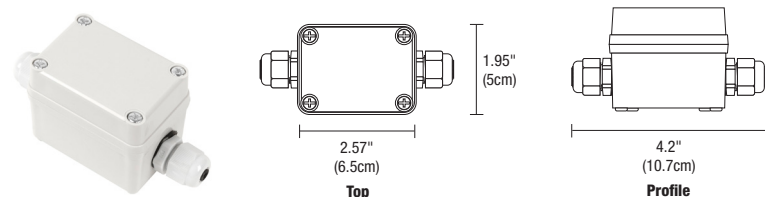
Con-1-2CORD-O Cord conductors included



Product	Wattage	Type	Voltage	Option
PSB	60W	UNI	24VDC	W
PSB Power Supply with Junction Box	60W 60 Watts 96W 96 Watts	UNI Uni Driver	24VDC 24VDC	W Wet Location

WET LOCATION JUNCTION BOX

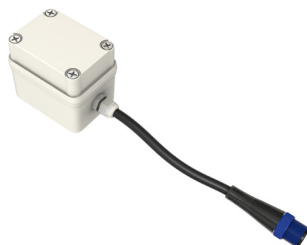
Wet-rated low voltage Splice Box with connectors.



Product	Wattage	Type	Voltage	Option
PSB	60W	UNI	24VDC	W
PSB Power Supply with junction box	60W 60 Watts 96W 96 Watts	UNI Uni Driver	24VDC 24VDC	W Wet Location

WET LOCATION JUNCTION BOX WITH 6" POWER CABLE

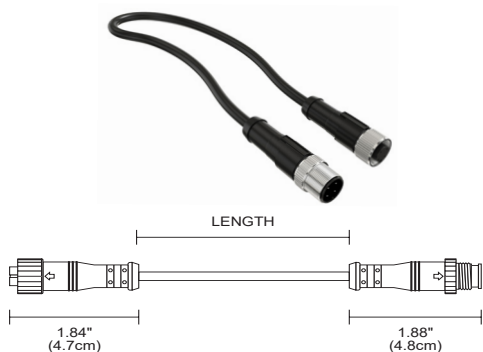
This watertight, multi-fixture Junction Box is especially designed for lighting in wet and damp locations. It is versatile, rugged and simple to install. The Junction Box comes standard with a 6" Flexible Cable providing easy, safe, and reliable connections for 24V low voltage luminaires. This box is approved for indoor and outdoor usage and complies with all the requirements of UL1241 and the National Electric Code.



Product	Canopy	Product	Size	Option
OC	2RE	5CON	6IN	W
OC Outdoor Cable	2RE 2" Rectangle	5CON 5 Pin Connector	6IN 6"	W Wet Location

WET LOCATION POWER/JUMPER CABLE

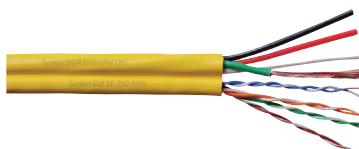
This Flexible Connector is designed to work with all of our Linear Outdoor Systems in outdoor damp and wet environments. This Flexible Connector is easy to install and configure, helping you create innovative lighting designs. Length 12" or 96" .



Product	Type	Product	Size	Option
OC	CFX	5CON	12IN	W
OC Outdoor Cable	CFX Flexible Connector	5CON 5 Pin Connector	12IN 12" 96IN 96"	W Wet Location

WET LOCATION CABLE PER FOOT

Our Wet Location, Cat5e 16 gauge 4 conductor cable is a durable and adaptable cable suitable for transmitting power, control, and switching to indoor and outdoor wet and damp environments (not for direct burial). Cable sold by the foot, simply specify the length (quantity) by the foot.



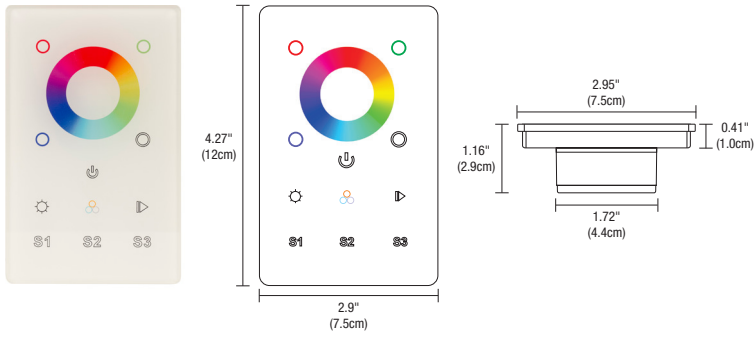
Product	Type
OC	CAT5-16-4
OC Outdoor Cable	CAT5-16-4 4 pair Cat5e with 4 16 gauge power wires

PROJECT	FIXTURE TYPE	DATE
---------	--------------	------

DMX SINGLE ZONE RGB & RGB+W

TOUCH CONTROLLER

REV 08.31.20



Description:

Full touch controller offers fast and accurate color tone adjustment and independent brightness control. The 1 zone controller can adjust RGB and RGBW LEDs smoothly and accurately. Independent smooth dimming of each channel enables the controller to achieve millions of colors. For indoor applications only, and includes a Power Adapter to operate the controller.

Applications:
Indoor

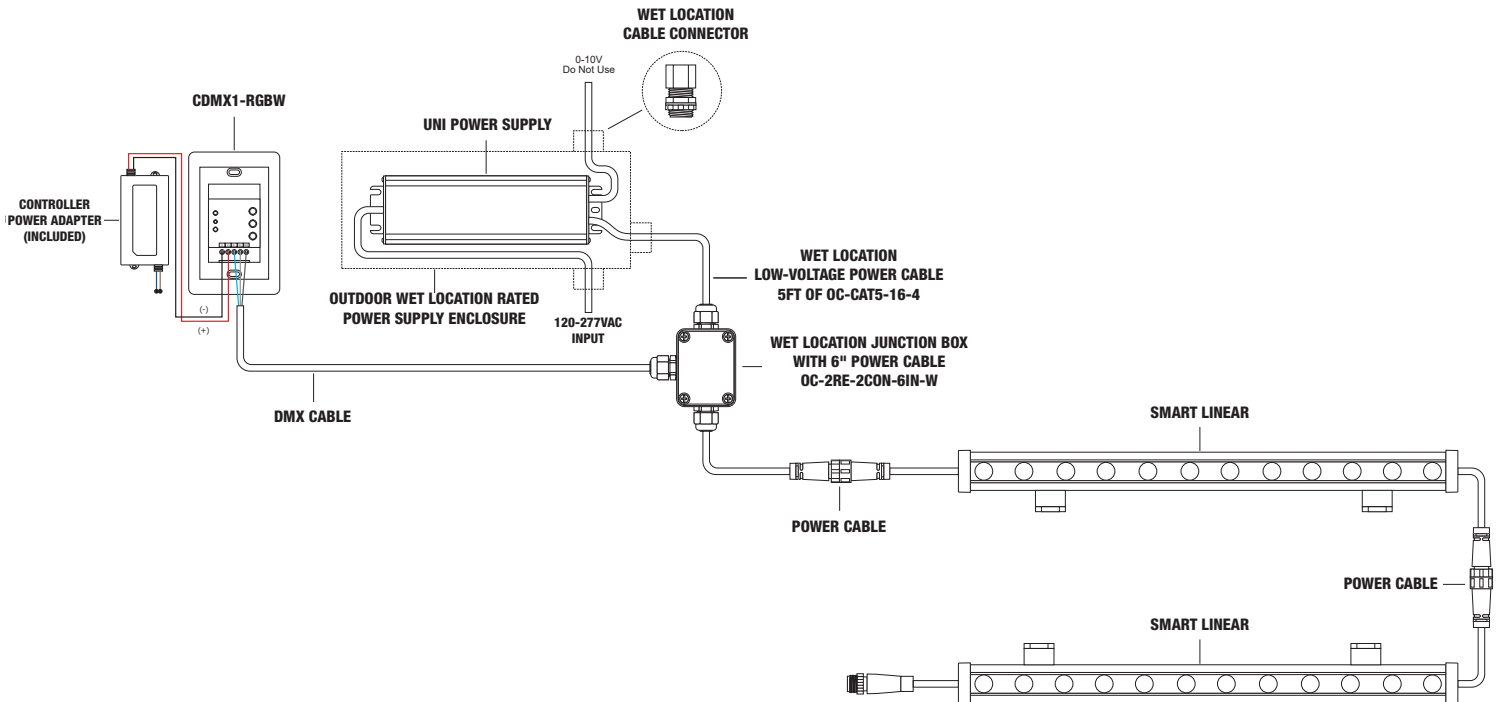
Power Input:
120-277VAC

Installation:

Fits in a single gang 2.5 inch deep junction box, not to be used with a multi gang box

Output Signal:
USITT DMX 512 (1990)

Product	Type	Finish
CDMX1	RGBW	WH
CDMX1 DMX 1 Zone Touch Controller	RGBW RGB & RGBW	WH White



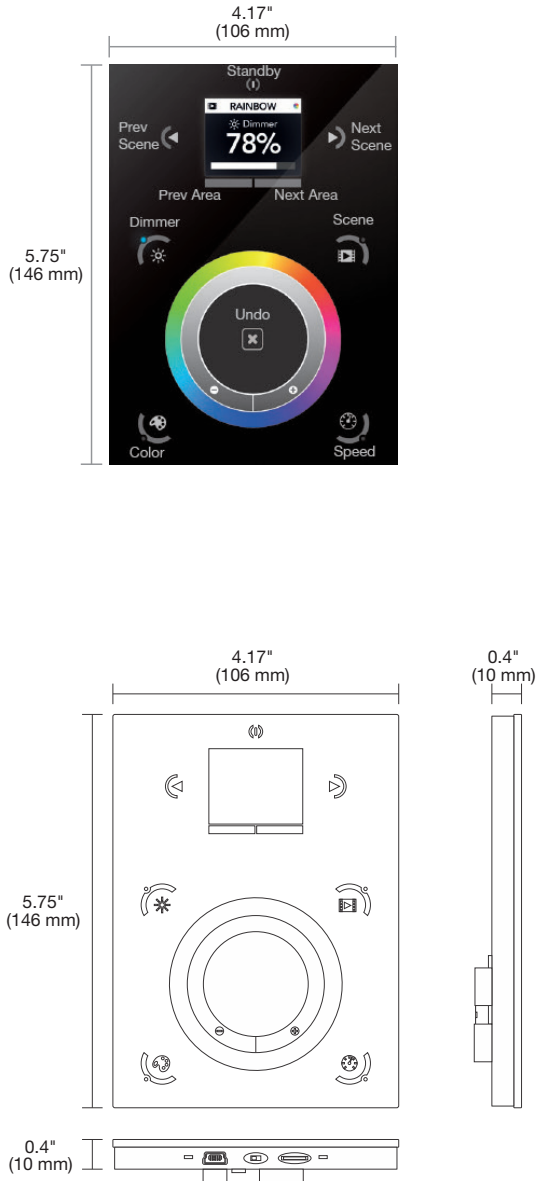


CTP

COLOR TOUCH SCREEN CONTROLLER WITH POWER ADAPTER



REV 08.31.20



DESCRIPTION:

Full touch controller offers fast and accurate color tone adjustment and independent brightness control. The 10 zone controller can adjust RGB and RGBW LEDs smoothly and accurately. Independent smooth dimming of each channel enables the controller to achieve millions of colors. For indoor applications only, and includes a Power Adapter to operate the controller.

FEATURES AND BENEFITS:

KEY FEATURES:

- Sleek glass design which sits 11mm from the wall
- Graphical color display to show selected environment
- Color/dimmer/speed palette
- Color temperature mixing
- Touch sensitive buttons. No mechanical parts
- Touch sensitive wheel allows for accurate color selection
- Multi-zone microSD memory
- Multi-room control with 500 scenes, 10 zones
- 1024 DMX channels. Control 340 RGB fixtures
- USB & Ethernet connectivity for programming and control
- RS232, Dry Contact Ports and an Infra Red input port
- Clock and calendar with Sunrise/Sunset triggering
- Network communication. Control lighting remotely
- Catalog of designs including black and white glass
- OEM customization of the color palette and logo
- Windows/Mac software to set dynamic colors/effects
- iPhone/iPad/Android remote and programming apps

APPLICATIONS:

Indoor

POWER ADAPTER:

9VDC 0.65A (included)

POWER INPUT:

7VDC 0.6A

OUTPUT SIGNAL:

DMX512 1,024 channels total

INPUT SIGNAL:

Universal IR receiver (Sold Separately), RS232, Contact Closure, Live Computer Link, DMX512, WiFi

CONNECTIONS:

USB, Ethernet, RS232, Clock, 8 dry contact ports, open drain output

MEMORY:

microSD (32GB Max)

COMPUTER AND MOBILE DEVICE REQUIREMENTS:

IPHONE/IPAD/ANDROID:

The controller may be used with any of the following apps: DMX Lightpad 3, Easy Remote and Arcolis may be downloaded from App Store or Google Play.

ESA PRO SOFTWARE (WINDOWS ONLY, TIMELINE AND MULTI-ZONE):

Windows ME, XP, Vista, 7 or 8 (32 bits and US 2.0, computer connection required for initial setup only.)

ESA2 SOFTWARE (WINDOWS/MAC, SINGLE ZONE):

Windows ME, XP, Vista, 7 or 8

Mac OS X 10.7 (Lion), 10.8 (Mountain lion), 10.9 (Mavericks), 10.10 (Yosemite)

Product

CTP

CTP Color Touch Screen Controller with Power Adapter

PROJECT		FIXTURE TYPE		DATE	
---------	--	--------------	--	------	--



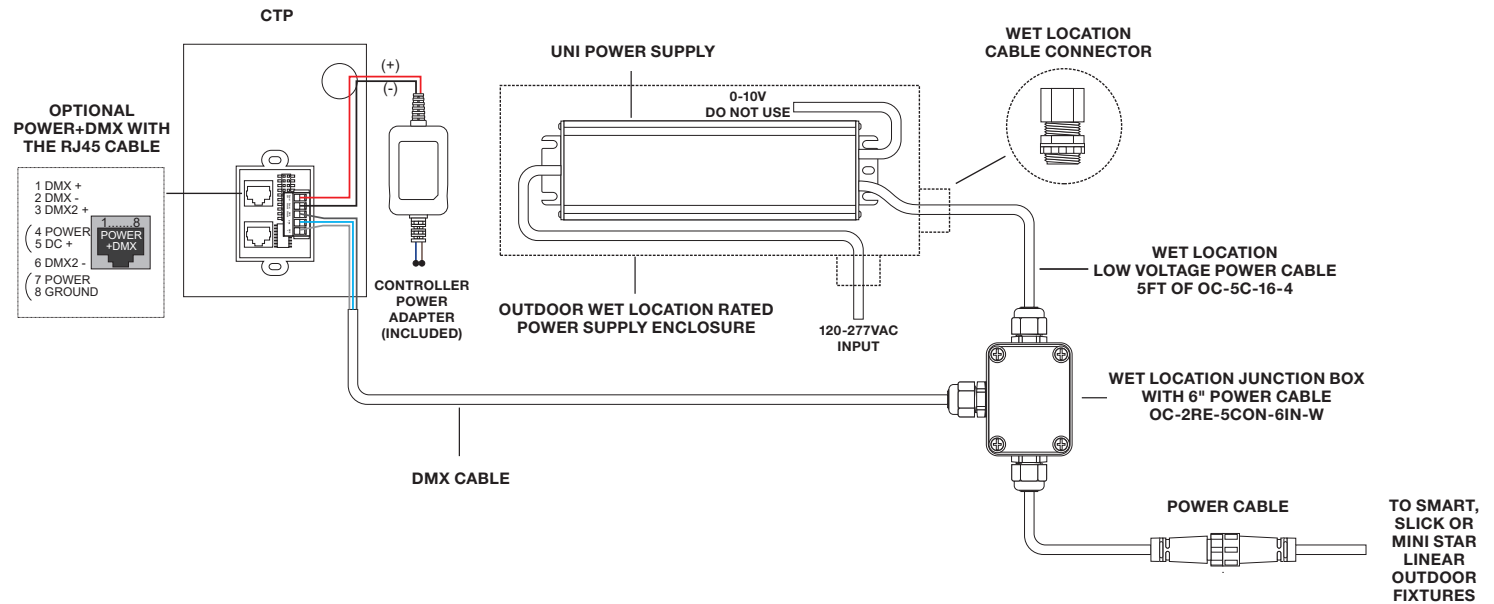
CTP

COLOR TOUCH SCREEN CONTROLLER WITH POWER ADAPTER



REV 08.31.20

WIRING DIAGRAM FOR LINEAR LIGHTING RGB/RGBW: SMART, SLICK AND MINI STAR ONLY



Con-1-2CORD-O Cord conductors included

OUTDOOR POWER SUPPLY FOR SMART, SLICK & MINI STAR FIXTURES

Universal Power Supply: 120/277VAC-24VDC with Universal dimming ELV, Triac or 0-10V dimmers. 100-0% Flicker free dimming. Aluminum casing for optimal heat dissipation. Isolated output power per NEC and UL safety requirements. UL & ETL recognized/ listed, meets UL8750, 1310 requirement. Auto-reset; short circuit, overload and thermal protection. Class 2 power supply. Efficient, High power factor > 0.90. Exceeds California Title 24 Requirements AAA rating. Efficiency > 84% Power Factor > 0.90. Case TC 90C° Max. Protection Input / Output Storage -30°C / +90°C Humidity 95% RH Max. Class 2 Power Supply Dimming ELV, Triac, 0-10V IP Rating IP20, IP67



Product	Wattage	Type	Voltage	Option
PSB	60W	UNI	24VDC	W
PSB Power Supply with junction box	60W 60 Watts 96W 96 Watts	UNI Uni Driver	24VDC 24VDC	W Wet Location

PROJECT		FIXTURE TYPE		DATE	
---------	--	--------------	--	------	--