



VANISHING POINT PISTON

LED 12VAC



DESIGNED BY GREGORY KAY | ASSEMBLED IN AMERICA | US PATENT PENDING

REV 04.19.23



VR-FJ12

Vanishing Point .5" Opening Plaster-In, Remote Power supply (Order separately)

DESCRIPTION:

The Vanishing Point Piston Plaster-In System with integrated LED offers four distinct mounting options. Drywall Application **VR**: - Remote Power Supply (Order Separately) NO visible canopy, you will only see the 0.5" connection at the ceiling as the Fast Jack fixture vanishes into the ceiling. You may feed up to thirty 8 watt LED fixtures with 12V remote power supply. **V2P** - Connection point at ceiling will show a slight outline of the 2.0" round canopy, ELV power supply fits within the J-box. May be painted over to hide 2" round outline of canopy, but will need to be repainted if power supply needs to be replaced. Millwork Application: **V2MR** - Connection point at ceiling 2.0" canopy sits flush in Millwork ceilings for a clean look; remote power option may feed up to thirty 8 watt LED fixtures. **V2MP** - Connection point at ceiling 2.0" canopy sits flush in Millwork ceilings with included ELV power supply that fits inside J-box. Two Finish Options.

FINISH



Satin Nickel
SN



White
WH

PHYSICAL:

Construction	Machined from Billet Aluminum
Mounting Options	Fast Jack Monopoint Connection (VR / V2P / V2MP / V2MR)
Lens	Field changeable TRI-Lens gives a smooth uniform beam at SP Spot Flood 15°, NF Narrow Flood 25°, FL Flood 35°, WF Wide Flood 45°
Fixture Tilt	90°
Fixture Rotation	360°
Average LED Life	60,000 hrs at normal use
Warranty	5 Years Pro-rated

PISTON LUMEN PERFORMANCE @3000K:

Lumen Flux	517 Lumens
Lumens Per Watt	58
Total Wattage	9W
CRI	95+

*See complete TM30 data below

ELECTRICAL:

Remote Power VR, V2MR	120-12VAC Remote Power Supply, Class 2 at 60 watts up to 15' away or UL2108 up to 300 watts with transformer up to 40' away. May use up to 30 Piston fixture on 300 watt transformer
Power in Canopy V2P, V2MP	120-12VAC up to 50-Watts ELV power supply fits within the included J-box
Location	Suitable for damp or dry location, interior use only
Approvals	ETL, (Conforms to UL1598 and CSA 22.2 #250.0) Class 2 with 60 watt Transformer
Power Supply	Requires 12VAC-compatible power source (order separately)
Dimming	Dimmable to 1%, percent of flicker <25%. Triac and ELV dimming standard. Compatible with Lutron Diva, Skylark, and Legrand ELV dimmers (Dimmers sold separately).



V2P-FJ12

Vanishing Point 2" Flush Canopy to dry wall, with ELV power supply in J-Box

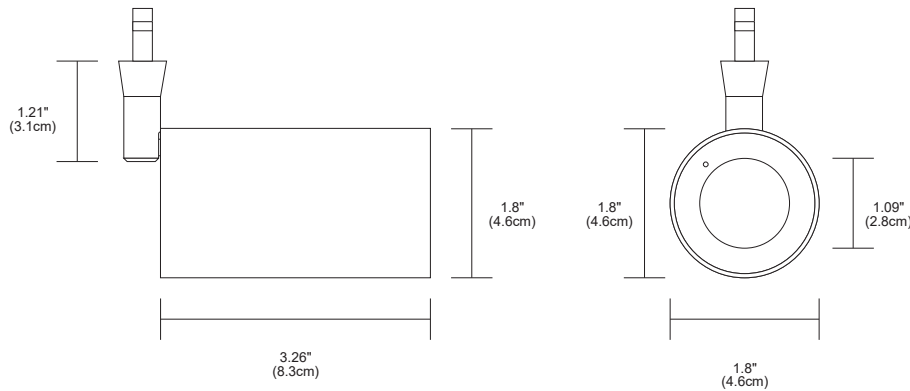


V2MR-FJ12

Vanishing Point 2" Millwork Flush-Mount Canopy, Remote Power Supply (sold separately)

System	Type	Fixture	Head / Beam Spread Lens	Stem Height	Color Temperature	Finish	
VR	FJ12	PST	NF	1	30K	WH	
VR	Vanishing Point 0.5" Connector In Drywall, No Outline of Canopy at connection point, Remote Power Supply (sold separately)	FJ12 Fast Jack 12VAC	PST Piston	SP Spot 15° NF Narrow Flood 25° FL Flood 35° WF Wide Flood 45°	1 1" (2.5cm)	27K 2700K Incandescent White 30K 3000K Warm White	WH White SN Satin Nickel
V2P	Vanishing Point 2.0", Slight Outline of 2" Flush of White Canopy, With Power Supply Included in J-Box						
V2MR	Vanishing Point 2" Millwork Flush-Mount Canopy, Remote Power Supply (sold separately)						
V2MP	Vanishing 2" Millwork Flush-Mount Canopy, with Power Supply Included in J-Box						

PROJECT		FIXTURE TYPE		DATE	
---------	--	--------------	--	------	--

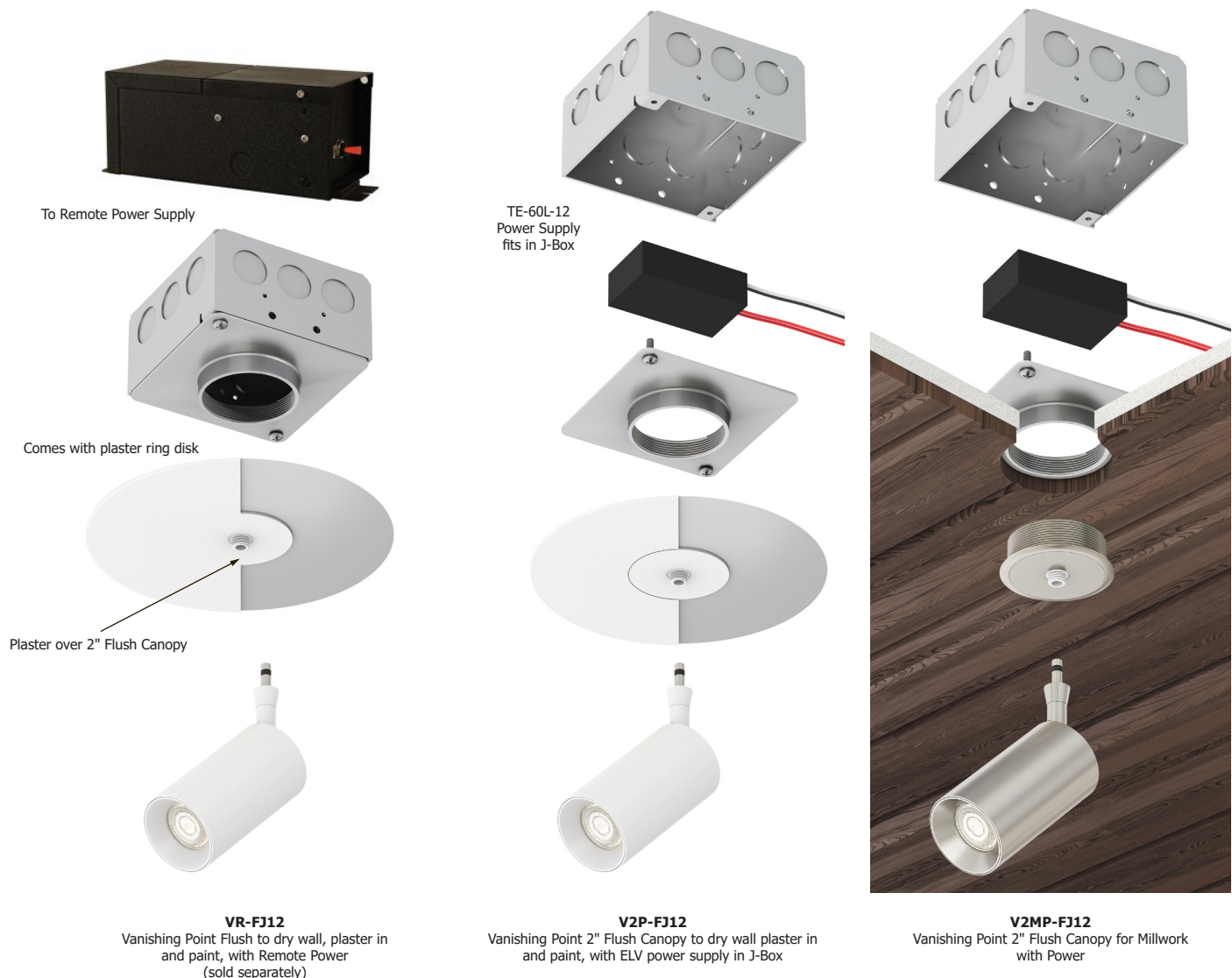


V2P, V2MP Power Supply in Canopy (Included):
Class 2, Up to 50W when used in IC, 60W when non-IC. ELV Power Supply

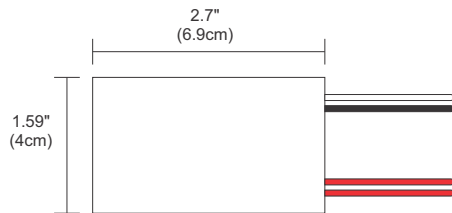
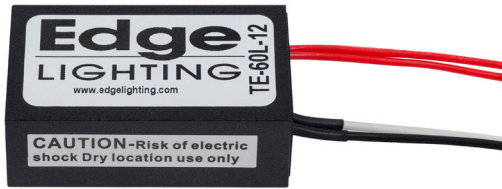
VR, V2MR Remote Power Supply (Sold Separately):
150/300W Magnetic Low Voltage

DIMMING
ELV or Triac

Warranty / Labels:
Prorated 5 year warranty. Assembled in America
ETL (Conforms to UL1598 and CSA 22.2 #250.0)



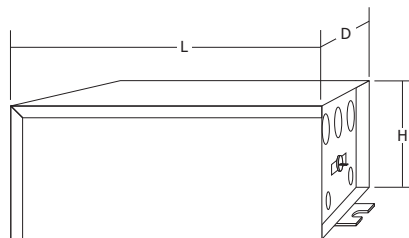
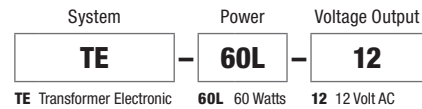
PROJECT		FIXTURE TYPE		DATE	
---------	--	--------------	--	------	--



REMOTE 60W 12VAC CLASS 2 POWER SUPPLY

TE-60L-12 60 Watt 12VAC Electronic Transformer converts 120 volt line voltage to 12 volts and features built-in short-circuit protection. The solid, lightweight remote power supply fits inside a standard electrical junction box behind a power feed canopy. Must be in an accessible location or inside an electrical box. Must be within 10' of lamp, max six 9 watt fixtures.

- No load technology, works with LED AC loads
- Isolated output power per NEC and UL safety requirements
- UL recognized/listed Class 2 power supply, meets UL 2108 requirements
- Auto-reset; Short circuit, Overload and Thermal protection
- Soft start
- Dimmable with ELV dimmer

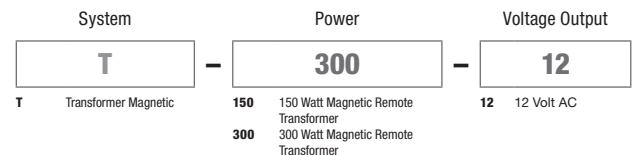


Dimensions:
8.75"(L) x 4.4"(D) x 3.8"(H)
(22.2cm x 11.2cm x 9.7cm)

REMOTE MAGNETIC TRANSFORMER

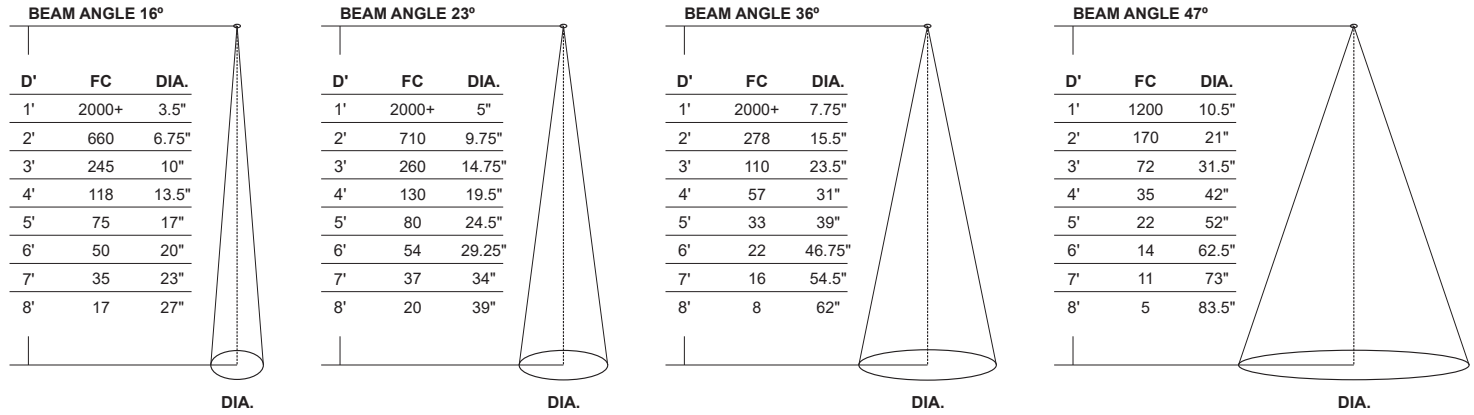
150W AND 300W 12VAC POWER SUPPLY (SOLD SEPARATELY)

The 150 watt or 300 watt 12 Volt Remote Magnetic Transformer converts 120VAC line voltage into 12VAC low voltage power and are protected by fast-acting circuit breakers. The low voltage output powers the Vanishing Point System up to 300 watts using LED MR16 12V lamps, 9 watts max per connection. Power up to 30 Piston Vanishing Point fixtures using a single power supply at 300 Watts and 9 Watts per Lamp. Dimmable with Magnetic Low Voltage Dimmer sold separately.



VANISHING POINT PISTON

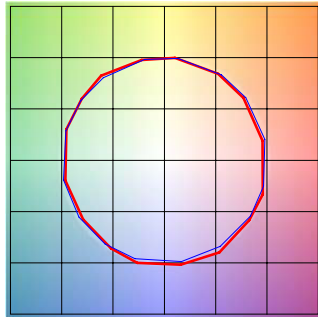
LED 12VAC



TM-30-15 DATA

3000K | Rf: 93.2 | Rg: 100.8

COLOR VECTOR GRAPHIC

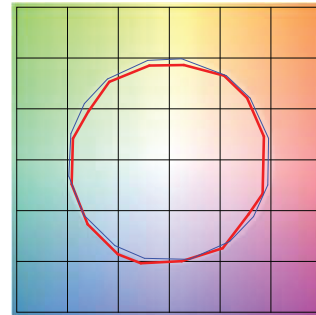


Red Test Blue Reference

HUE BIN	Rf	GRAPHIC SHIFTS %	
		CHROMA	HUE
1	94.1	-2.5%	0.9%
2	95.4	-2.0%	1.1%
3	92.2	-0.9%	3.4%
4	94.5	0.0%	2.8%
5	94.0	0.1%	2.8%
6	94.9	2.7%	0.5%
7	95.4	0.2%	-1.9%
8	97.5	-0.1%	-1.5%
9	96.0	-1.7%	0.8%
10	91.1	-2.1%	4.0%
11	88.9	0.2%	7.4%
12	90.5	3.5%	3.0%
13	94.4	2.9%	-1.3%
14	91.4	4.5%	-3.9%
15	92.5	1.1%	-4.1%
16	89.0	0.7%	-7.9%

2700K | Rf: 87.7 | Rg: 96.1

Color Vector Graphic



Red Test Blue Reference

HUE BIN	Rf	GRAPHIC SHIFTS %	
		CHROMA	HUE
1	88.0	-4.3%	2.6%
2	91.6	-2.4%	2.0%
3	93.7	-1.4%	1.9%
4	88.9	-5.6%	-3.1%
5	92.3	-5.5%	-0.5%
6	92.9	-3.5%	0.1%
7	84.5	-7.5%	4.6%
8	90.8	-3.0%	4.4%
9	84.5	-1.3%	8.3%
10	83.9	2.0%	9.8%
11	87.2	5.3%	7.1%
12	89.2	5.4%	-2.6%
13	88.7	0.3%	-7.8%
14	86.8	1.7%	-9.3%
15	87.6	-5.4%	-1.3%
16	83.6	-3.3%	-9.5%

PROJECT		FIXTURE TYPE		DATE	
---------	--	--------------	--	------	--