



© 2015 Edge Lighting. All Rights Reserved.

1718 W. Fullerton Ave
Chicago, IL 60614
Tel: 773-770-1195
Fax: 773-935-5613
www.edgelighting.com
info@edgelighting.com

SS-HR-F

904-SS-HR-F_01

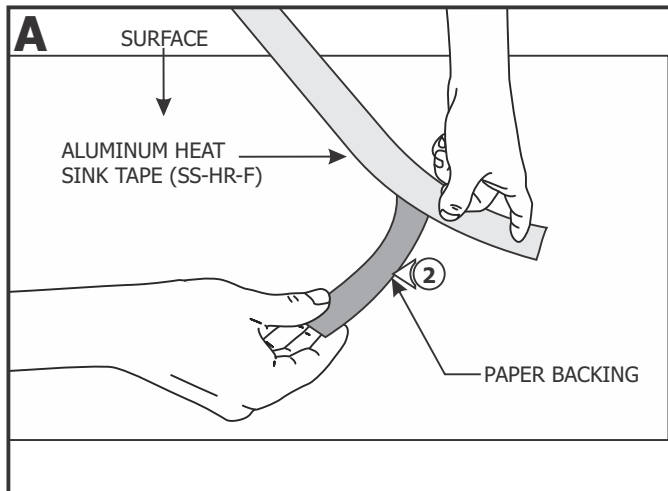
Installation Instructions for **Flat Heat Sink Tape**

IMPORTANT INFORMATION

- This product is used as a heat sink to dissipate heat generated by LEDs and to extend their potential life expectancy. Refer to the installation

SAVE THESE INSTRUCTIONS!

Install the Aluminum Heat Sink Tape



NOTE: The soft strip LEDs are rated for 40,000 hours when using the aluminum heat sink tape.

NOTE: The adhesive tape of the aluminum heat sink needs to be affixed to smooth, clean surfaces (2" minimum). The tape adhesive does not work well with porous, textured, or unfinished wood surfaces. For these surfaces, soft strip clips are required (sold separately).

- 1:** Clean the area thoroughly where soft strip LED will be installed.
- 2:** Remove the backing from the aluminum heat sink tape (SS-HR-F) and firmly press into place where the LED soft strip will be mounted.