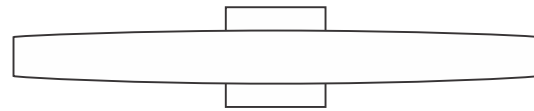


Installation Instructions for Regal LED

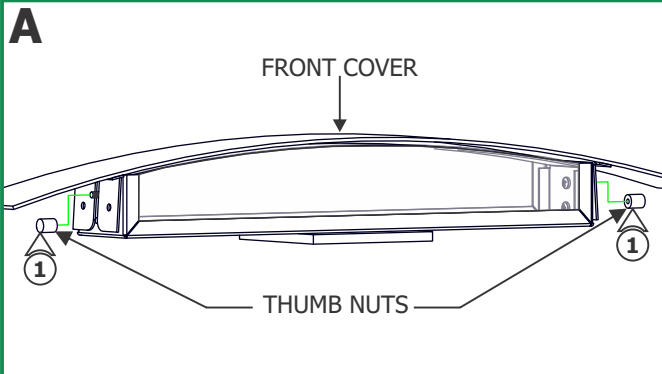
IMPORTANT SAFETY INSTRUCTIONS

- Use this fixture indoors only.
- This product is ETL listed for damp locations.
- This product is wall mounted only.
- This product can mount to either a 4" square junction box with round plaster ring or an octagon junction box.
- This product can be dimmed with a standard low-voltage electronic dimmer.
- This product must be installed by a qualified electrician.
- **Before beginning any electrical work, ensure that power to the junction box is turned OFF.**

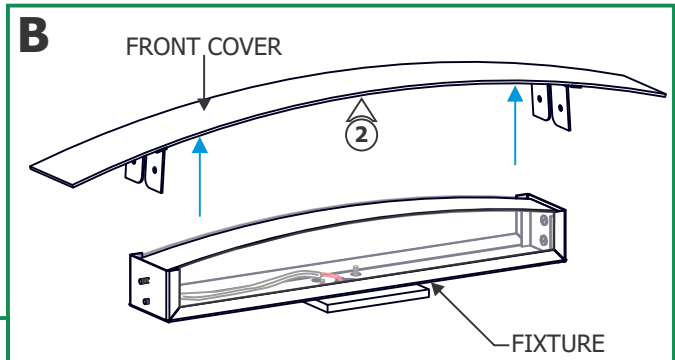
SAVE THESE INSTRUCTIONS!



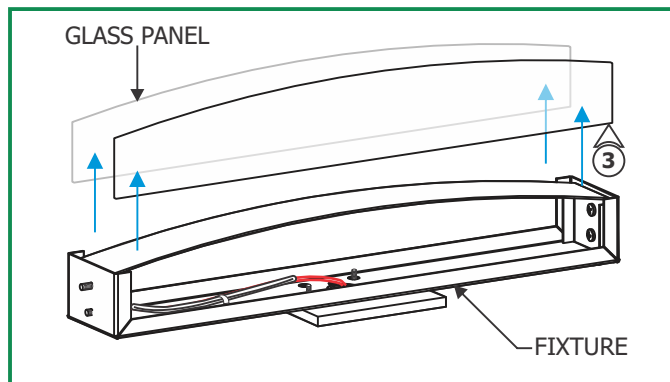
Install the Fixture



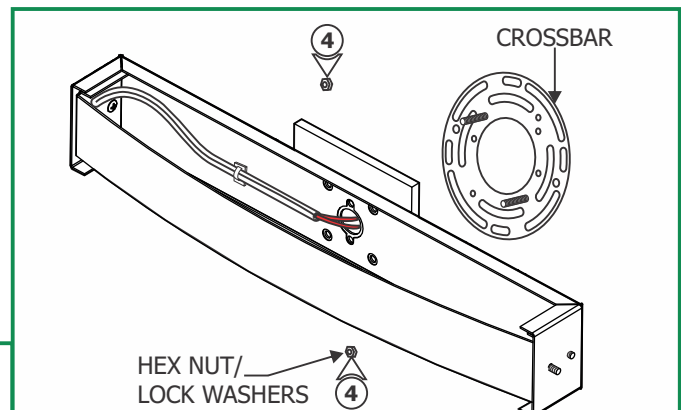
- 1:** Remove the two thumb nuts on the sides of the fixture body to detach front cover.



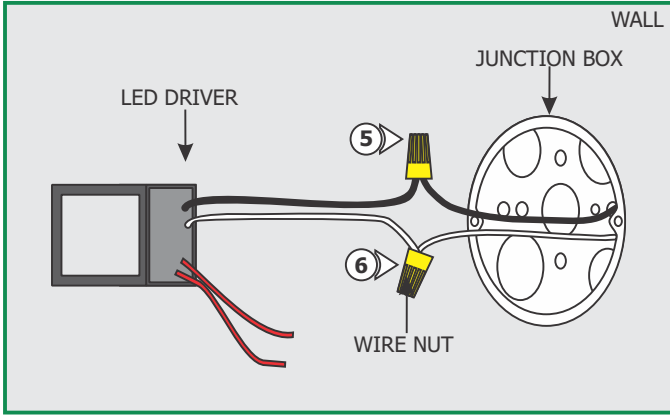
- 2:** Remove the front cover from the fixture.



- 3:** Slide the glass panels out of the slots in the fixture.



- 4:** Loosen and remove the two hex nuts and lock washers from the center of fixture body to remove the crossbar assembly.



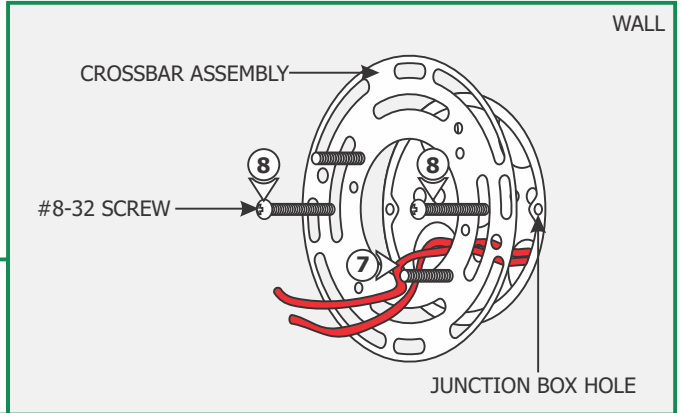
NOTE: Make sure the power to the electrical box is off before continuing.

5: Connect the black LED driver wire to the HOT wire in the junction box.

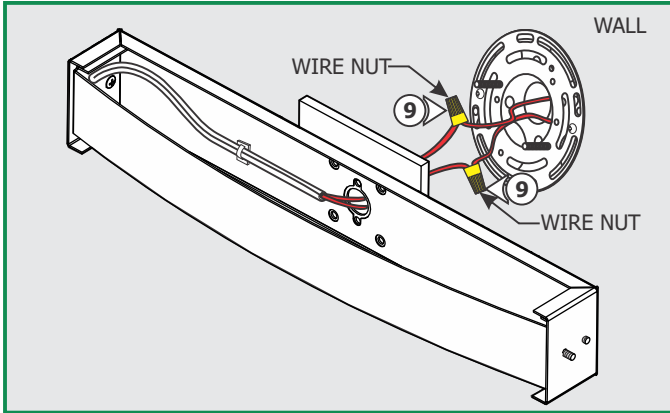
6: Connect the white LED driver wire to the NEUTRAL wire in the junction box. Place wire connections and LED driver into the junction box.

7: Feed the power wires through the crossbar assembly center hole.

8: Mount the crossbar assembly to the junction box holes with the provided two #8-32 screws.

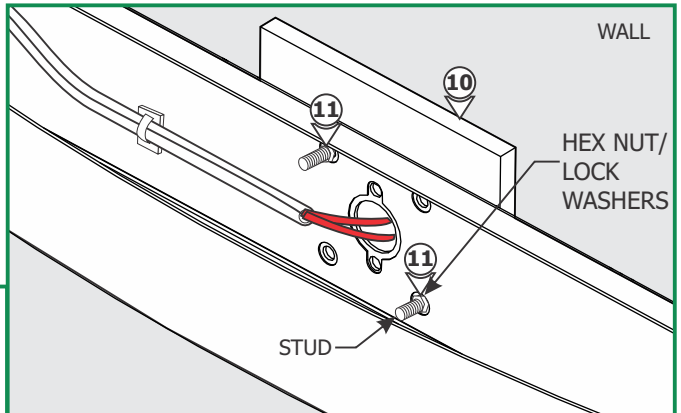


9: Connect each fixture wire to one red LED driver wire using wire nuts.

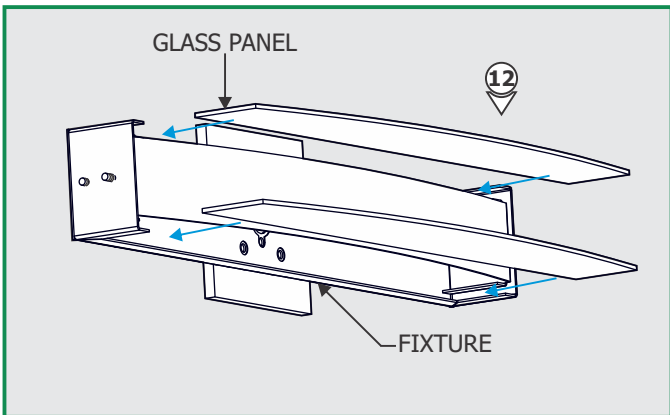


10: Slide the canopy holes onto the threaded crossbar studs

11: Secure the fixture to the crossbar studs using the two hex nuts and lock washers.



12: Slide the glass panels into top and bottom of slots of the fixture.



13: Replace the front cover.

14: Replace the thumb nuts onto the mounting screws and tighten to secure front cover in place.

