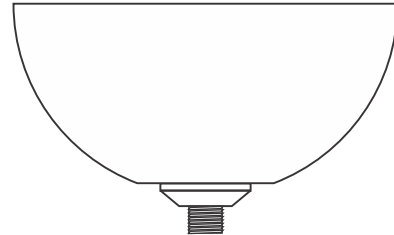


## Installation Instructions for 4" Surface Mount Fast Jack LED Power Canopy

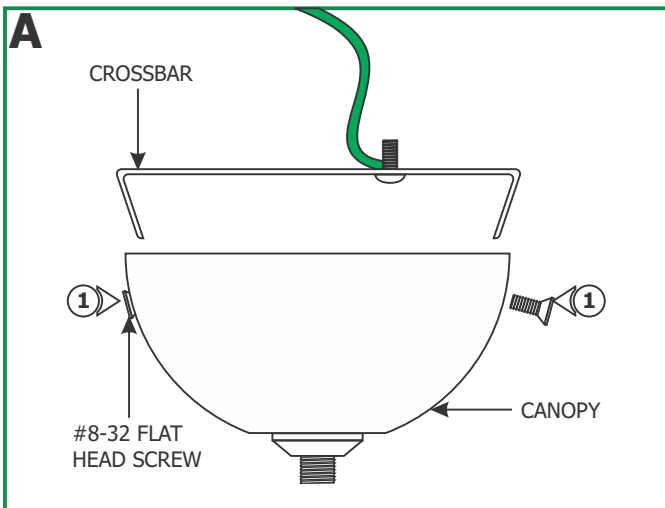
### IMPORTANT INFORMATION

- This product is ETL listed for indoor dry locations.
- This product can be installed to a 4" electrical box with round plaster ring, or to an octagon electrical box.
- Minimum electrical box volume must be 6 cubic inches (98 cubic centimeters).
- For dimming information visit [www.edgelighting.com](http://www.edgelighting.com).
- This product can be used with LED or halogen Fast Jack fixtures.

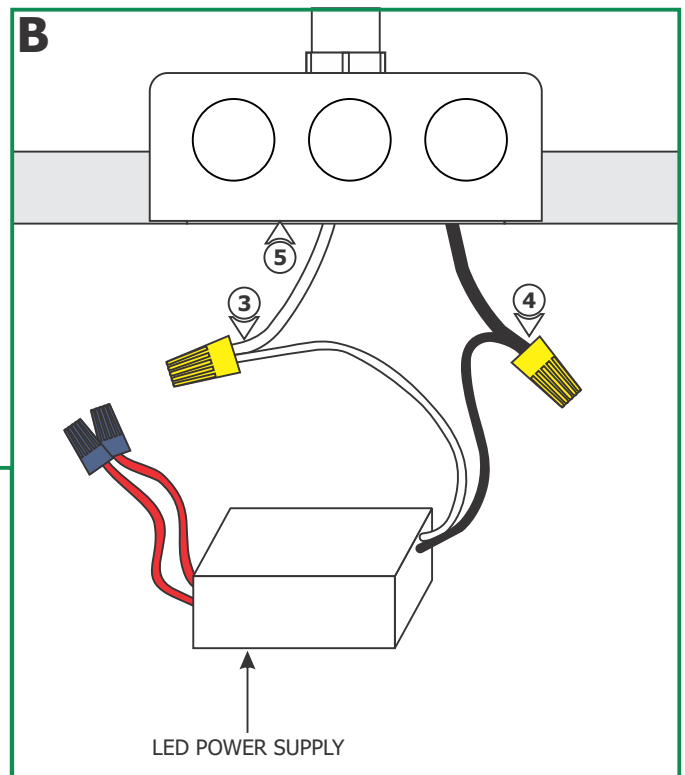
**SAVE THESE INSTRUCTIONS!**



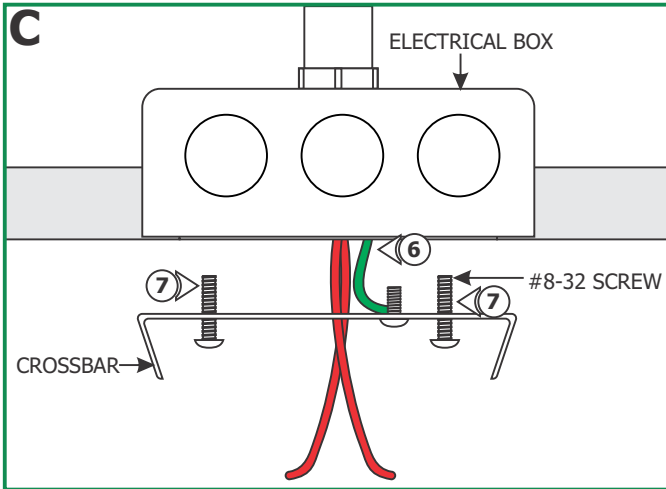
## Install the Canopy



**1:** Loosen and remove the two #8-32 flat head screws from the canopy to remove the crossbar.



- 2:** Turn the power to electrical box off.
- 3:** Connect the white LED power supply wire to the neutral power wire with a wire nut.
- 4:** Connect the black LED power supply wire to the hot power wire with a wire nut.
- 5:** Place the LED power supply and wires inside the electrical box.

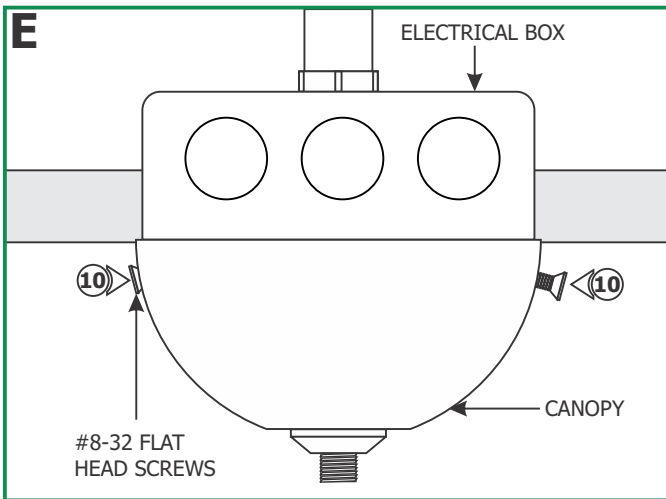
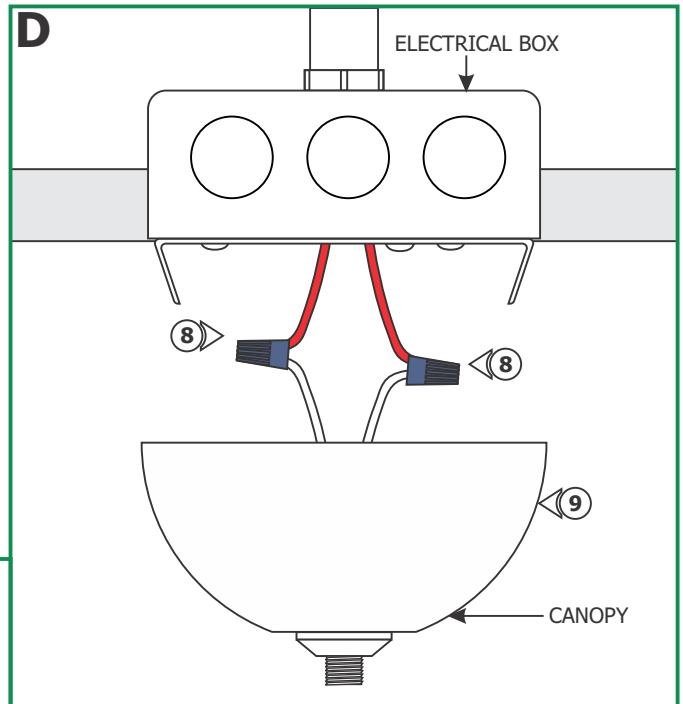


**6:** Make sure the crossbar is grounded in accordance with local electrical codes.

**7:** Mount the crossbar to the electrical box with the two #8-32 screws provided.

**8:** Connect each canopy wire to one LED power supply low voltage wire with a wire nut.

**9:** Place all wires inside the canopy.



**10:** Align and secure the canopy to the crossbar by tightening the two provided #8-32 flat head screws.

**CAUTION: Risk of Fire: MAX** load of Fast Jack LED canopy is 60 watt.

**11:** Use fingers to tighten the Fast Jack fixture connector into the Fast Jack canopy connector.

