



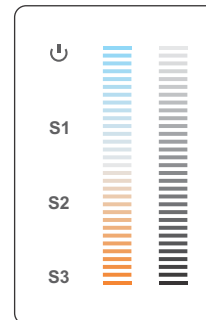
1718 W. Fullerton Chicago, IL 60614
 Ph: 773.770.1195 • Fax: 773.935.5613
 www.PureEdgeLighting.com • info@PureEdgeLighting.com
 © 2016 PureEdge Lighting. All Rights Reserved.

Installation Instructions for Tunable White Touch Controller

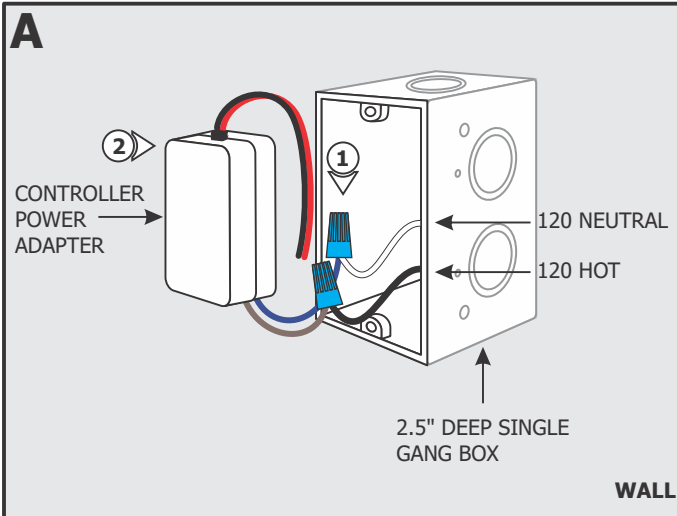
IMPORTANT INFORMATION

- This instruction shows a typical installation.
- This product mounts to a deep single gang box.
- This product works with any DMX controller.
- This product must be installed by a qualified electrician.
- Ensure that the cable is secured tightly in the connector.
- Check if the output voltage of any LED power supplies used comply with the working voltage of the product.

SAVE THESE INSTRUCTIONS!

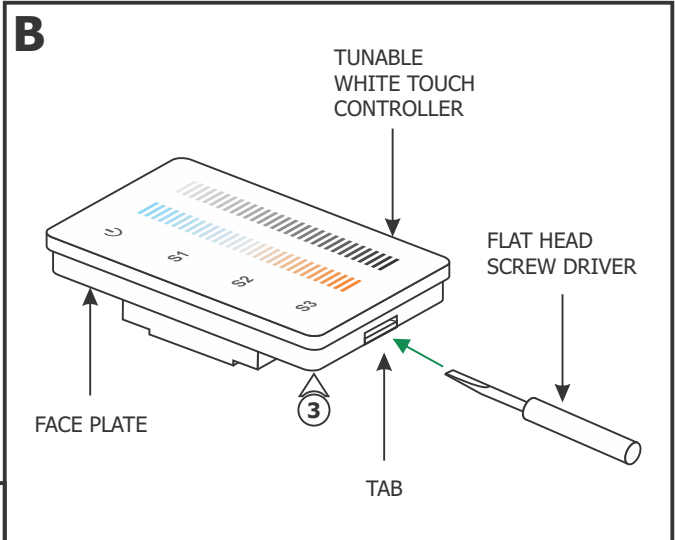


Install the Controller

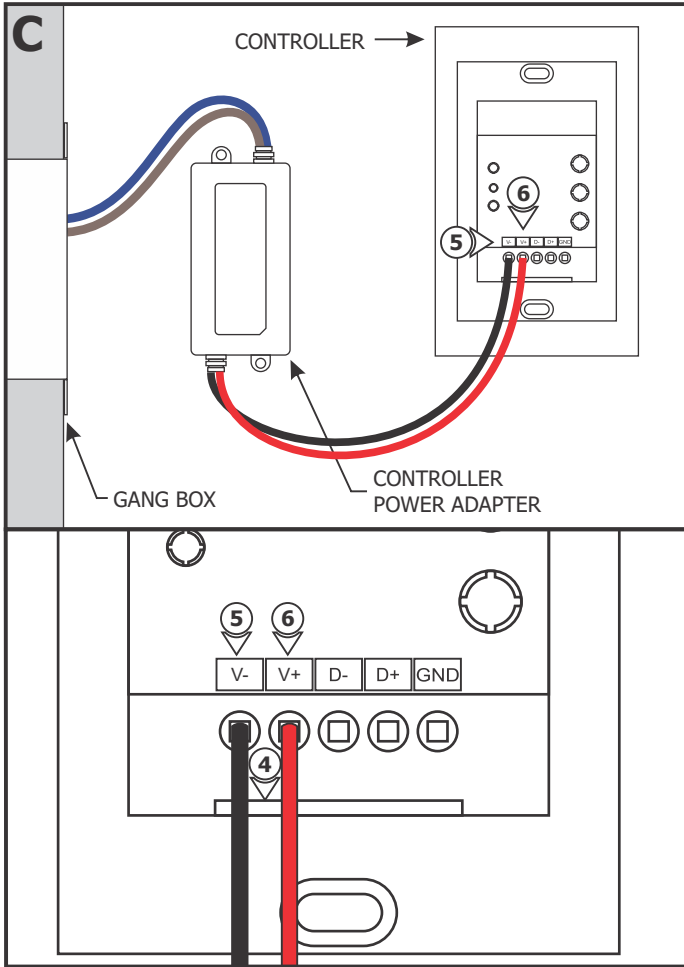


NOTE: Before beginning any electrical work, ensure that power to the electrical box is turned off.

- 1:** Connect the brown and blue wires of the controller power adapter to the 120 volt hot and neutral wires with wire nuts respectively.
- 2:** Place the controller power adapter inside the deep single gang box.



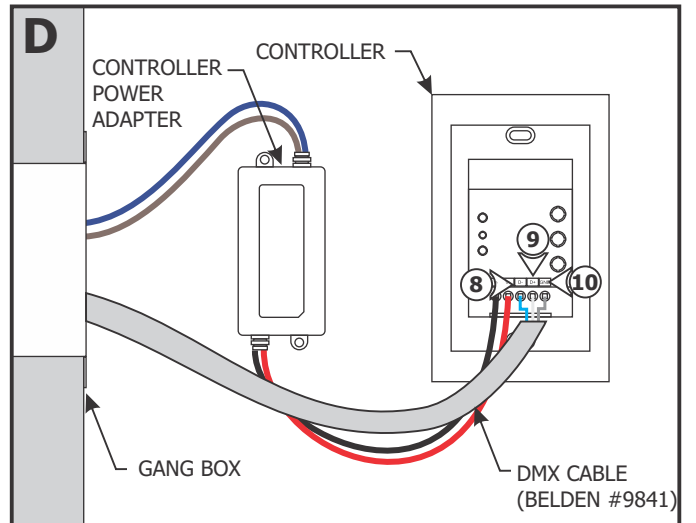
- 3:** Pry the face plate of the Tunable White Touch Controller using a flat head screw driver.



4: Loosen the screws under the "V-" and "V+" terminals of the controller with a flat head screw driver.

5: Insert the black wire of the controller power adapter into the "V-" terminal and tighten the screw.

6: Insert the red wire of the controller power adapter into the "V+" terminal and tighten the screw.



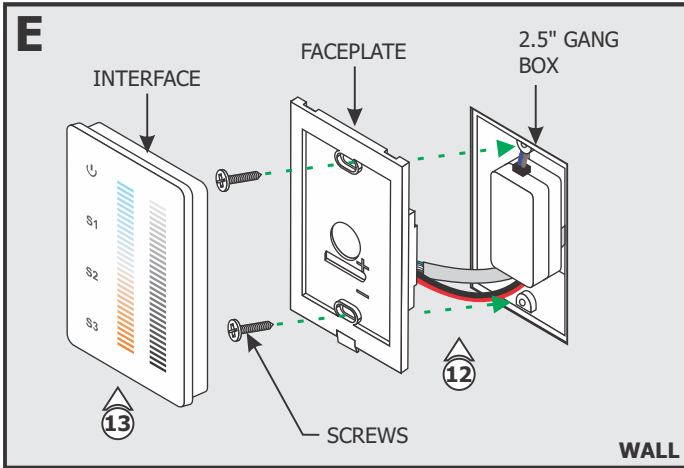
7: Loosen the screws under the "D-," "D+" and "GND" terminals of the controller with a flat head screw driver.

8: Insert one data wire (blue with white stripes wire) into the "D-" terminal and tighten the screw.

9: Insert the second data wire (white with blue stripes wire) into the "D+" terminal and tighten the screw.

10: Insert the third data wire (bare shield wire) into the "GND" terminal and tighten the screw.

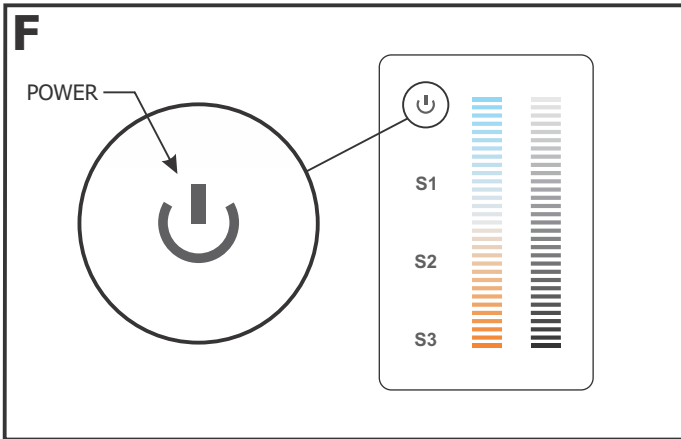
11: Refer to the instructions with the DMX power supply to connect the DMX wires completing the installation. See the wiring diagram on page 4.



12: Align the face plate with the gang box and secure using the supplied screws.

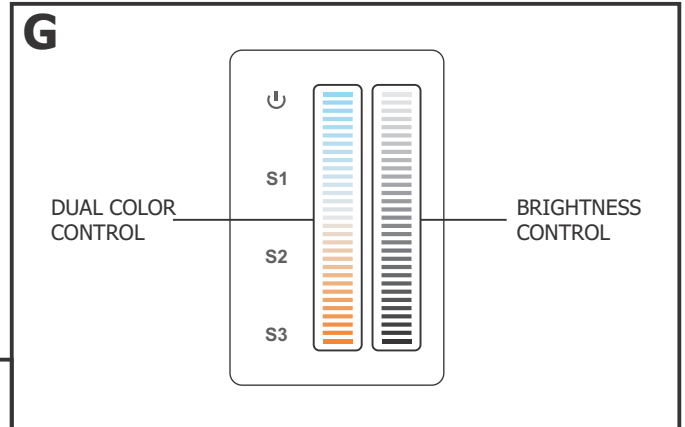
13: Align the interface with the face plate and press to secure into place.

Operational Guide

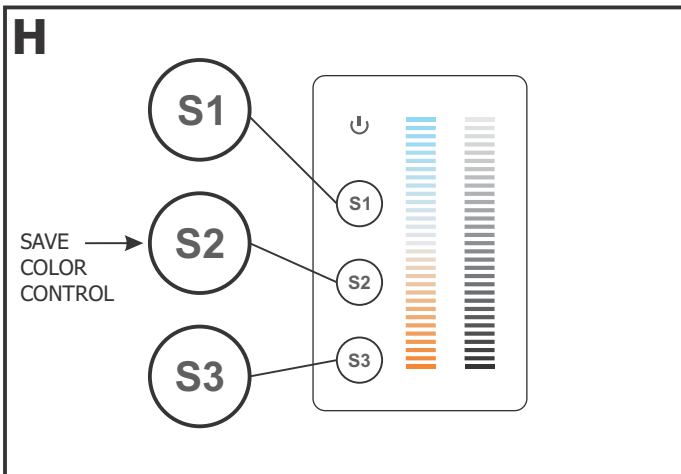


NOTE: The controller is a soft action device, expect two seconds response time.

1: Press the Power button to turn the device on and off.



2: Tap or slide up and down the slider to dim or adjust color temperature of each color individually.



3: Press and hold S1, S2, or S3 for over two seconds to save settings.

4: Tap once to activate the saved setting.

CDMX1-2XK WIRING DIAGRAM

