



PURE  EDGE   
LIGHTING

# LOOK BOOK

PipeLine Lighting Systems

USA Patent





# PipeLine

Designed By Gregory Kay



## PipeLine Modular

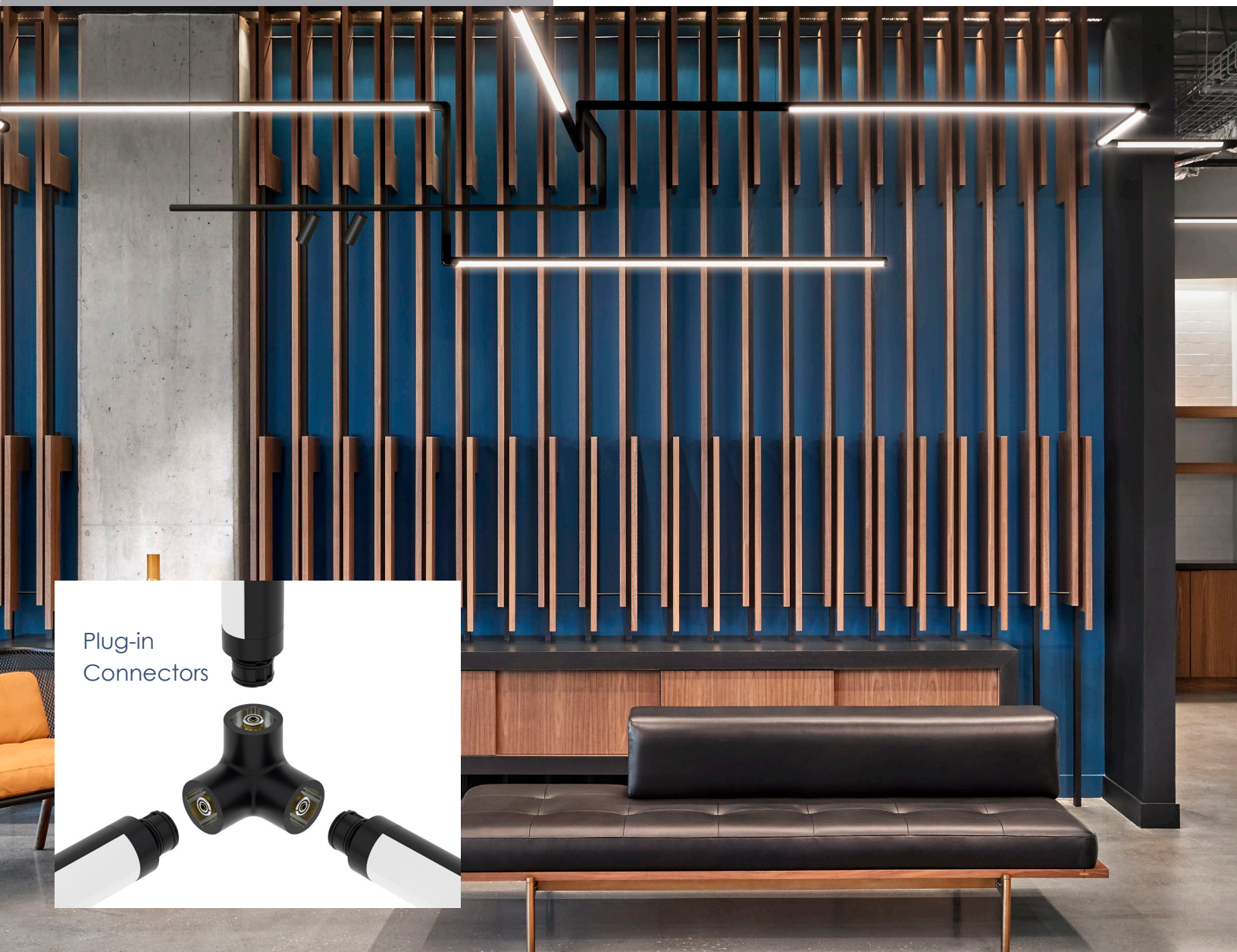
Design a Unique Lighting Layout

PipeLine Modular is a flexible lighting system featuring a round profile to seamlessly blend in with existing pipes, conduit and vents. The 24 VDC plug-and-play installation makes lighting design easy. Pipeline's design features multiple connector options and light channel lengths making it easy to create, install, and update later! PipeLine delivers a modern industrial look that enhances commercial spaces with high or open ceilings. It features multiple color temperatures to choose from, high CRI, and two warm dim options.



# Suspension

Our patented Pipeline Modular Suspension can turn corners and scale walls while going up and around existing ceiling ducts and vents. The channels rotate 360° for optimal direct or indirect illumination with multiple track head options. Designers can easily create the perfect dimensional lighting layout due to Pipeline Modular's plug-and-play construction.



Plug-in  
Connectors





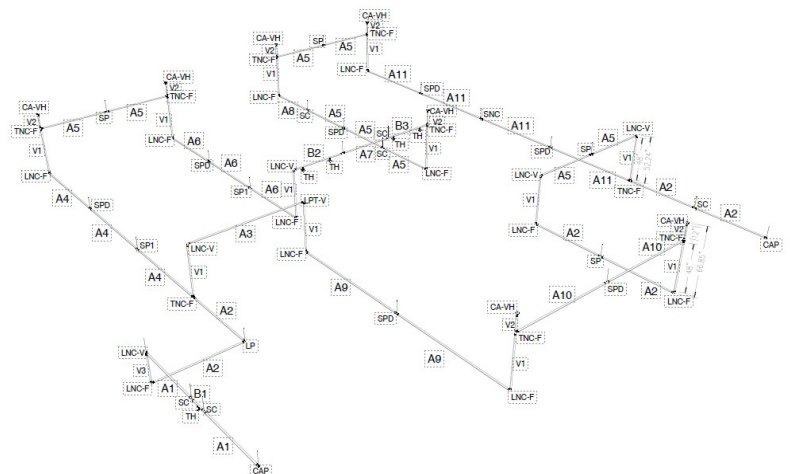


**Shown here:** Pipeline Modular Suspension with custom colored channels and connectors





Designing with PipeLine is easy. Just send us your CAD drawings or sketches and we will send you a bill of materials.





## Design with Your Custom Colors

Pipeline Modular also gives designers the option for customized colored channels and connectors utilizing the RAL color system. This is a truly unique feature that makes Pipeline stand out. Designers can achieve branding at every turn.











Shown in Chrome



# Display

## PipeLine Display

Highlight Focal Walls and Retail Displays

Pipeline Display is an innovative and versatile stem mounted lighting system with high CRI to make colors rich and vibrant. Mix and match sleek tubes of diffused LED light to easily create your ideal fixture. Its patented design allows the channels to rotate 360° for optimal lighting control. This system comes in linear sections from 12"-72" and runs as long as 240" with 5 watts per foot. Get up to 144" with 7 watts per foot and 120" with 10 watts per foot before re-feeding.





# PipeLine Stem Mount Wallwash

## Illumination Reinvented

The Pipeline Stem Mount is a patented and innovative rotatable wall wash that will mount to ceilings, walls and tables. Reinventing the architectural wall wash solution, the 360° rotation allows you to effortlessly fine-tune the beam angle delivering a clean, uninterrupted stream of light. Available in six designer finishes, Warm Dim Technology, and multiple color temperatures.









# Vertex

## PipeLine Vertex

Form, Function & Contemporary Style

The Pipeline Vertex Suspension lighting system brings together form, function and style. Each pipeline channel can be arranged according to your vision, in sizes 2 feet to 10 feet. It offers an uninterrupted direct beam of glare-free light with a diffused white lens, as well as a center or remote power supply. The innovative flexibility of the system allows you to create the perfect functional lighting design for your space.



**Shown here:** PipeLine Vertex End Feed





Highly customizable, Pipeline Vertex Suspension segments can be anywhere from 12" to 120" inches long with nine color temperatures available, including Warm Dim technology. Its design versatility can easily pair multiple segments together with plug-and-play power feeds.



















# Tri-Pipeline

## Tri-PipeLine

A Trifecta of 360 Degree Illumination

Introducing a new dimensional light fixture with refined industrial appeal! Tri-Pipeline Suspension with remote power is an innovative linear LED fixture with three to six channels that can be rotated 360°, allowing you to effortlessly shine the light up for indirect ambient lighting, or downward for task and general illumination, and anywhere in between. Each channel produces clean, uninterrupted beams of light through a diffused white 176° Lens. Illuminate at every angle... create beautiful spaces with task lighting paired with ambient uplight.







Shown here: Tri-PipeLine in Brass





**Shown here:** Tri-Pipeline and Pipeline Linear Suspension in Black











# Track

## PipeLine Track

Embrace the Open Ceiling  
with Modern Track Lighting

Get sleek, industrial lighting that compliments your environment... easily customize your lighting design with Pipeline 2 Circuit Suspension with adjustable track heads, offered in single and dual circuit options. The uplight creates a clean, uninterrupted indirect beam of light, available in seven standard color temperatures, including Warm Dim 2700K or 3000K that dims down to 2000K. The Pipeline Two Circuit Suspension is compatible with Pure Edge T24 track heads.

**Shown here:** PipeLine Track with Uplight









**Shown here:** PipeLine Modular Suspension with track heads in White





# Linear

## Pipeline Linear Suspension

A Single Channel of Perfect Illumination

An understated and modern look... Pipeline 1 Suspension with up or down light is an innovative linear LED fixture that rotates 360°, allowing you to effortlessly shine the light up for indirect ambiance, downward to accommodate tasks, and anywhere in between for general illumination. Suspend a clean, uninterrupted beam of light through a diffused White 176° Lens. Highly customizable, and a designer favorite, Pipeline Linear Suspension is available in Warm Dim which allows the lighting to achieve a golden, warm 1900K.



















# Vanity

## PipeLine Vanity

Aesthetic Simplicity

Modern, sleek, and minimalistic design. Pipeline 2 Wall/Vanity with Center and End Feed options is a slender yet powerful linear LED with multiple finish and hardware choices making it the perfect fixture for almost any environment including minimal and transitional spaces. Choose from multiple standard color temperatures, including two Warm Dim options of (27D) or 3000K (30D) that dim down to 2000K. The 280° or tunable white with remote power supply 2000K-6500K diffused white lens provides clean, uninterrupted illumination in all directions and is available in many standard incremental lengths up to 120". Pipeline 2 Wall/Vanity has so many length options (2.3" increments), you can size the channels to any mirror or vanity length.







**Shown here:** PipeLine 2 Vanity with 4" center canopy





**Shown here:** PipeLine 2 Vanity with 1" canopy













1718 W. Fullerton Ave Chicago IL 60614 | 773-770-1195  
[www.pureedgelighting.com](http://www.pureedgelighting.com) | [design@pureedgelighting.com](mailto:design@pureedgelighting.com)

