



Patent Pending

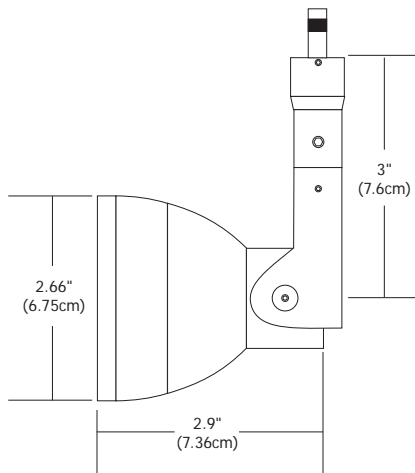
Additional System Connectors



M-NEO-3-SN
Neo in Satin Nickel. Shown with
Monorail Fast Jack Connector.



M-NEO-3-PN
Neo in Polished Nickel. Shown with
Monorail Fast Jack Connector.



Description:

Neo, Pro Aim MR16 fixture features a hidden precision machined gear adjustment for hot aiming with an Allen screwdriver (included). Self locking tilt, manual locking horizontal rotation and spread lens locking capability. Pivots 0° to 90° degrees adjustment and rotates 360°. Hood pulls off so lamp does not change positions when relamping. Comes with a Fast Jack connector and is 3" (7.6cm) in length to center of head.

System:

Mounts to any Fast Jack power canopy, Monorail Fast Jack Connector, Monorail 2 Circuit Fast Jack Connector, or Monorail Wall Fast Jack Connector.

Body Finish:

Satin Nickel, Polished Nickel, Antique Bronze or White

Length:

Available in 3" (7.6cm)

Lamp Type:

75 Watt MR16 (not included)

Weight:

.84 lb (.38 kg)

System	Fixture	Length	Finish
FJ	NEO	3	SN
FJ Fast Jack M Monorail M2 Monorail 2 Circuit	Neo Neo fixture	3 3" (7.6cm)	SN Satin Nickel PN Polished Nickel BZ Antique Bronze WH White

Additional System Connectors — Fast Jack Power Canopy Ordered Separately



PROJECT:

FIXTURE
TYPE:

DATE: