

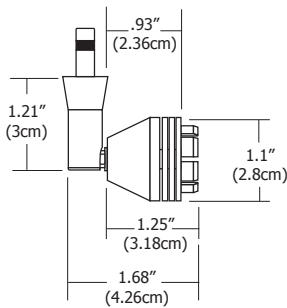


Additional System Connectors



FJ-LOW-SN-S1-SN

Fast Jack Low Rider with S1-SN, Little Shady Solid Accessory in Satin Nickel.



FJ-LOW-

Fast Jack Low Rider connects to any Monorail, Monorail 2-Circuit or Fast Jack Canopy Connector.



Description:

Low Rider Fast Jack fixture head features a 1.21" (3cm) stem length, rotates 360° and tilts 90°. Combine with any one of multiple shade accessories (required, sold separately) to complete the fixture in your preferred style. Holds two lenses.

System:

Mounts to any Fast Jack power canopy, Monorail Fast Jack connector or Monorail 2 Circuit Fast Jack connector.

Body Finish:

Satin Nickel, Polished Nickel or Antique Bronze

Lamp Specifications:

Up to 50 watt MR16 lamp GU5.3 bi-pin base - 12/24 volt (not included)

LED MR16 Compatible with S2 Shade Only

Shade Accessories (required, also sold separately):

S1 - Little Shady Solid, S2 - Little Shady Mesh, S3 - Glass Shade or S5 - Big Shady Solid

See Accessories Spec Sheet for Complete Details

Lens and Louver Accessories (sold separately):

Assorted Glass Lenses, **LO16-H** Hexcell Louver

Weight:

.40 lb (.18 kg)

FIXTURE CODE

System	Fixture	Finish	Accessory	Glass Color*	Finish
FJ	LOW	SN	S3	AM	SN
FJ Fast Jack M Monorail M2 Monorail 2 Circuit	LOW Low Rider	SN Satin Nickel PN Polished Nickel BZ Antique Bronze	S1 Little Shady Solid S2 Little Shady Mesh S3 Glass Shade S5 Big Shady	AM Amber (S3) WH White (S3) * Leave blank for S1, S2, S5	SN Satin Nickel (S1, S3, S5) PN Polished Nickel (S1, S2, S3) BZ Antique Bronze (S1, S2, S3, S5) BK Black (S1, S2)

Additional System Connectors — Fast Jack Power Canopy Ordered Separately



PROJECT:

FIXTURE
TYPE:

DATE: